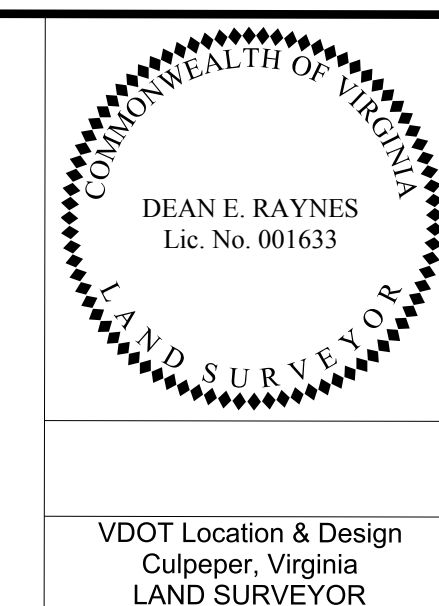


CULPEPER DISTRICT DESIGN UNIT

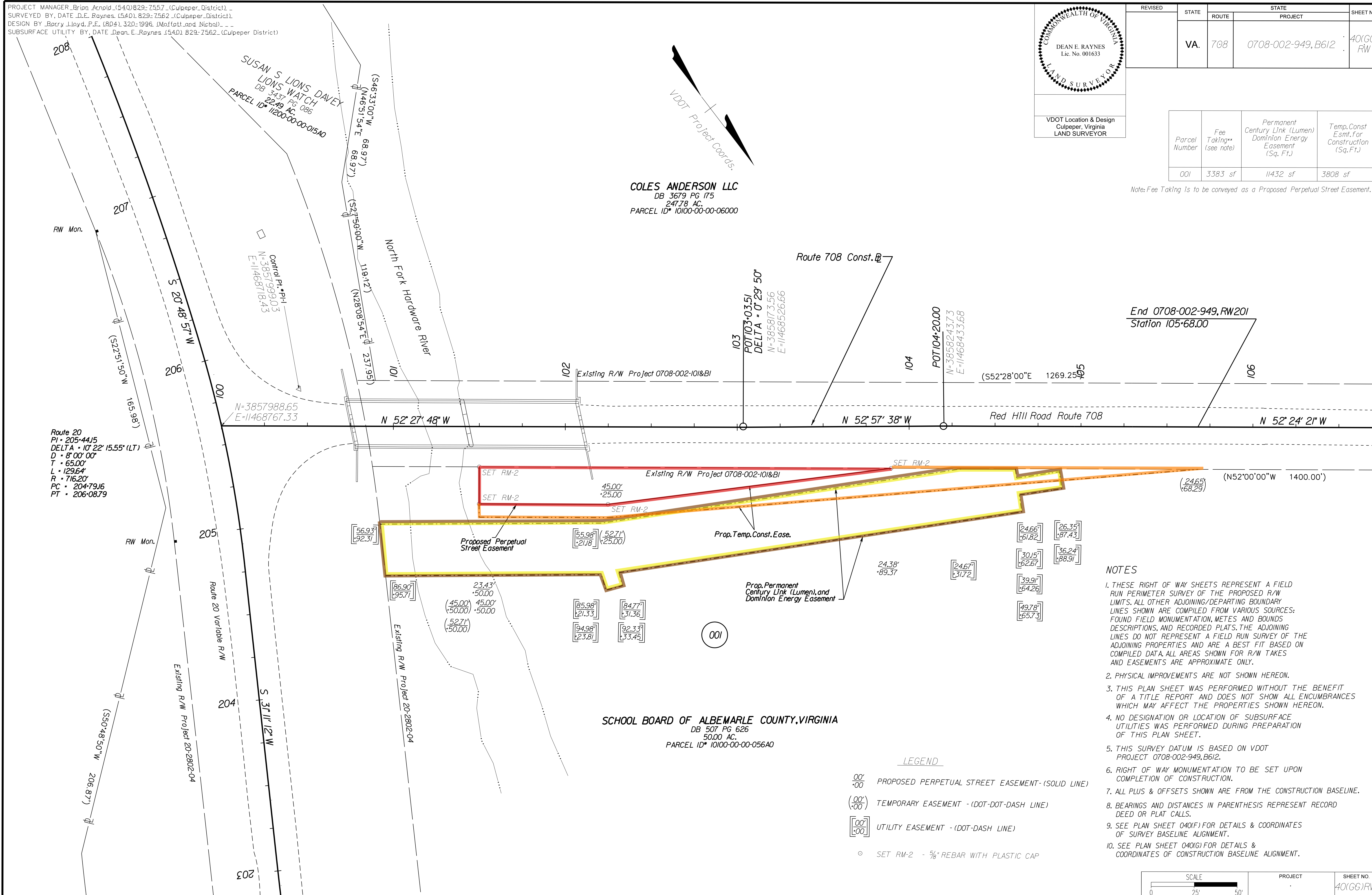
PROJECT MANAGER\_Brian\_Arnold\_(540)829-7557\_(Culpeper\_District)  
SURVEYED BY DATE\_D.E. Raynes\_(540) 829-7562\_(Culpeper\_District)  
DESIGN BY\_Barry\_Lloyd\_P.E. (804) 320-1996 (Maffatt\_and\_Nichol)  
SUBSURFACE UTILITY BY DATE\_Dean.E. Raynes\_(540) 829-7562\_(Culpeper\_District)



REVISED	STATE	ROUTE	PROJECT	SHEET NO.
	VA.	708	0708-002-949,B612	40(GG) RW

Parcel Number	Fee Taking** (see note)	Permanent Century Link (Lumen) Dominion Energy Easement (Sq. Ft.)	Temp. Const. Esmt. For Construction (Sq. Ft.)
001	3383 sf	11432 sf	3808 sf

Note: Fee Taking is to be conveyed as a Proposed Perpetual Street Easement.



Route 20  
PI • 205+44.15  
DELTA • 10° 22' 15.55" (LT)  
D • 8' 00" 00"  
T • 65.00'  
L • 129.64'  
R • 716.20'  
PC • 204+79.16  
PT • 206+08.79

COLES ANDERSON LLC  
DB 3679 PG 175  
247.78 AC.  
PARCEL ID\* 10100-00-00-06000

SCHOOL BOARD OF ALBEMARLE COUNTY, VIRGINIA  
DB 507 PG 626  
50.00 AC.  
PARCEL ID\* 10100-00-00-056A0

- NOTES**
- THESE RIGHT OF WAY SHEETS REPRESENT A FIELD RUN PERIMETER SURVEY OF THE PROPOSED R/W LIMITS. ALL OTHER ADJOINING/DEPARTING BOUNDARY LINES SHOWN ARE COMPILED FROM VARIOUS SOURCES: FOUND FIELD MONUMENTATION, METES AND BOUNDS DESCRIPTIONS, AND RECORDED PLATS. THE ADJOINING LINES DO NOT REPRESENT A FIELD RUN SURVEY OF THE ADJOINING PROPERTIES AND ARE A BEST FIT BASED ON COMPILED DATA. ALL AREAS SHOWN FOR R/W TAKES AND EASEMENTS ARE APPROXIMATE ONLY.
  - PHYSICAL IMPROVEMENTS ARE NOT SHOWN HEREON.
  - THIS PLAN SHEET WAS PERFORMED WITHOUT THE BENEFIT OF A TITLE REPORT AND DOES NOT SHOW ALL ENCUMBRANCES WHICH MAY AFFECT THE PROPERTIES SHOWN HEREON.
  - NO DESIGNATION OR LOCATION OF SUBSURFACE UTILITIES WAS PERFORMED DURING PREPARATION OF THIS PLAN SHEET.
  - THIS SURVEY DATUM IS BASED ON VDOT PROJECT 0708-002-949,B612.
  - RIGHT OF WAY MONUMENTATION TO BE SET UPON COMPLETION OF CONSTRUCTION.
  - ALL PLUS & OFFSETS SHOWN ARE FROM THE CONSTRUCTION BASELINE.
  - BEARINGS AND DISTANCES IN PARENTHESIS REPRESENT RECORD DEED OR PLAT CALLS.
  - SEE PLAN SHEET 040(XF) FOR DETAILS & COORDINATES OF SURVEY BASELINE ALIGNMENT.
  - SEE PLAN SHEET 040(XG) FOR DETAILS & COORDINATES OF CONSTRUCTION BASELINE ALIGNMENT.

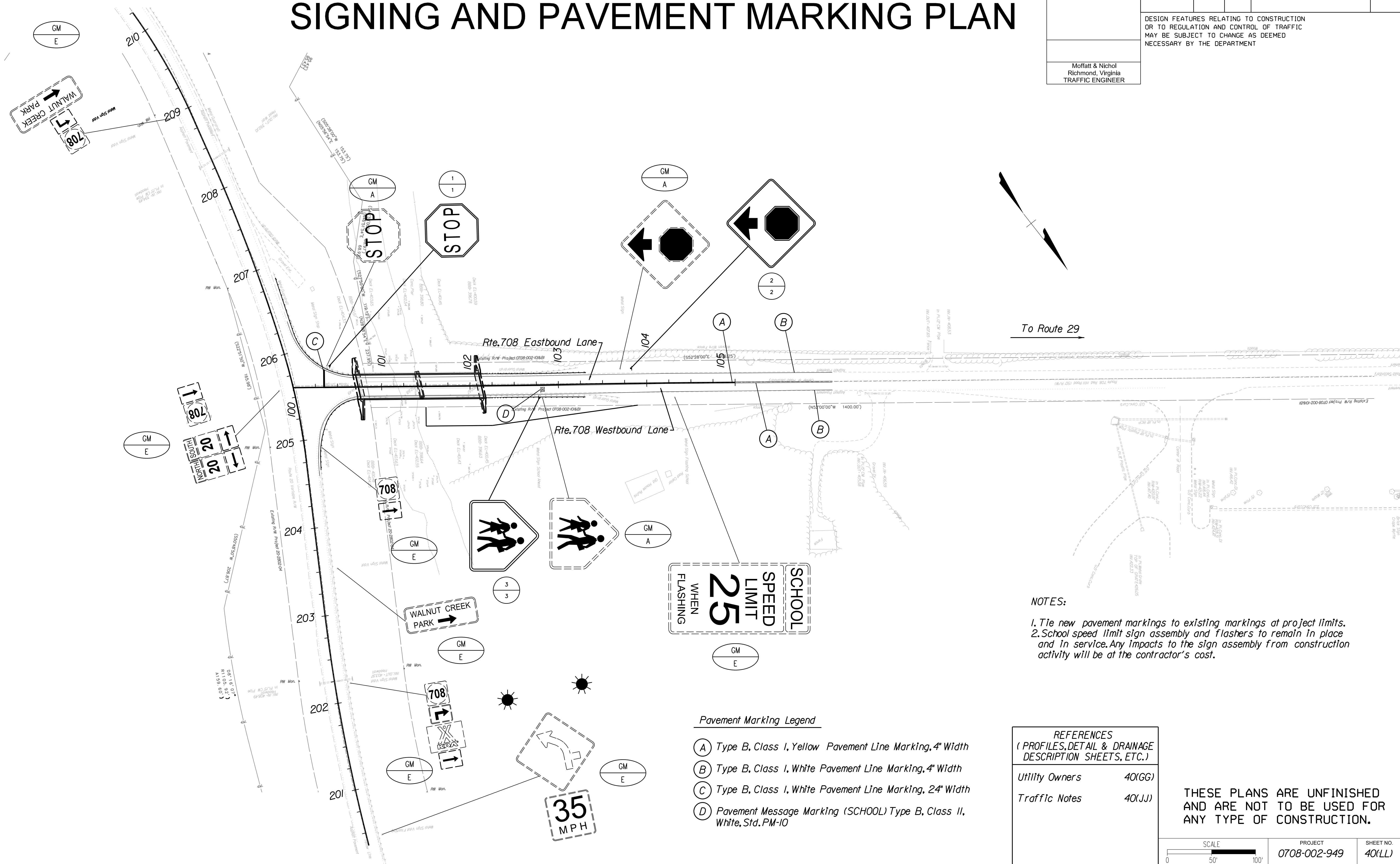
- LEGEND**
- 00' .00 PROPOSED PERPETUAL STREET EASEMENT - (SOLID LINE)
  - (00' .00) TEMPORARY EASEMENT - (DOT-DOT-DASH LINE)
  - [00' .00] UTILITY EASEMENT - (DOT-DASH LINE)
  - SET RM-2 - 5/8" REBAR WITH PLASTIC CAP

PROJECT MANAGER Brian Arnold (540) 829-7557 (Culpeper District)  
 SURVEYED BY, DATE D.E. Raynes (000) 000-0000 (Culpeper District)  
 DESIGN BY Barry Lloyd, P.E. (804) 320-1996 (Moffatt & Nichol)  
 SUBSURFACE UTILITY BY, DATE D.E. Raynes (000) 000-0000 (Culpeper District)

REVISED	STATE	STATE		SHEET NO.
	VA.	ROUTE	PROJECT	
		708	0708-002-949, B612	40(LL)
DESIGN FEATURES RELATING TO CONSTRUCTION OR TO REGULATION AND CONTROL OF TRAFFIC MAY BE SUBJECT TO CHANGE AS DEEMED NECESSARY BY THE DEPARTMENT				
Moffatt & Nichol Richmond, Virginia TRAFFIC ENGINEER				

# SIGNING AND PAVEMENT MARKING PLAN

CULPEPER DISTRICT DESIGN UNIT



To Route 29

**NOTES:**  
 1. Tie the new pavement markings to existing markings at project limits.  
 2. School speed limit sign assembly and flashers to remain in place and in service. Any impacts to the sign assembly from construction activity will be at the contractor's cost.

- Pavement Marking Legend**
- (A) Type B, Class I, Yellow Pavement Line Marking, 4" Width
  - (B) Type B, Class I, White Pavement Line Marking, 4" Width
  - (C) Type B, Class I, White Pavement Line Marking, 24" Width
  - (D) Pavement Message Marking (SCHOOL) Type B, Class II, White, Std. PM-10

**REFERENCES**  
 (PROFILES, DETAIL & DRAINAGE DESCRIPTION SHEETS, ETC.)

Utility Owners	40(GG)
Traffic Notes	40(JJ)

**THESE PLANS ARE UNFINISHED AND ARE NOT TO BE USED FOR ANY TYPE OF CONSTRUCTION.**

SCALE 0 50' 100'	PROJECT 0708-002-949	SHEET NO. 40(LL)
---------------------	-------------------------	---------------------

PROJECT MANAGER Brian Arnold (540) 829-7557  
SURVEYED BY, DATE D.F. Raynes  
DESIGN BY Matt & Nichol (804) 320-1996  
SUBSURFACE UTILITY BY, DATE D.F. Raynes

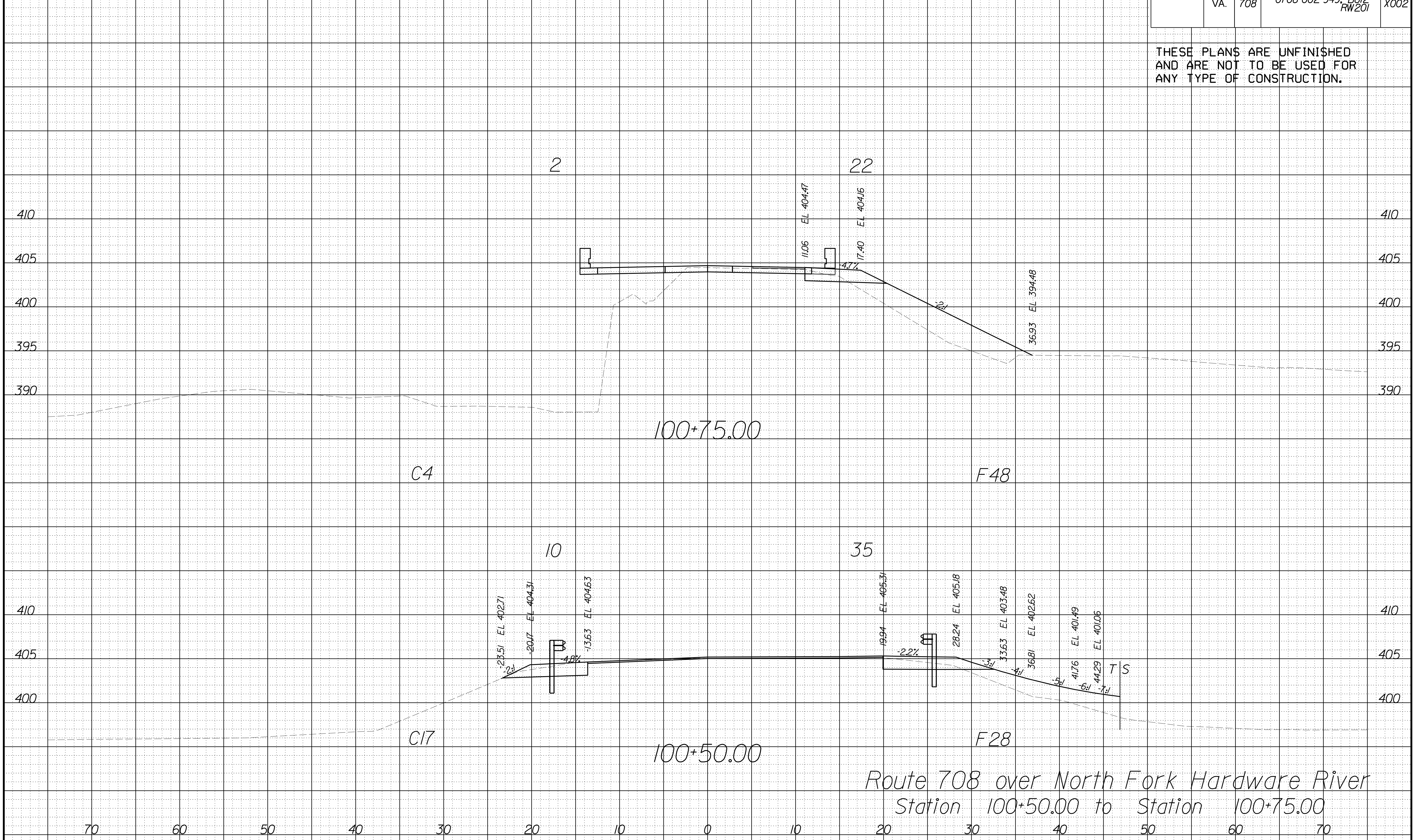
### CROSS SECTIONS

SCALE 1 IN. = 5 FT

DESIGN FEATURES RELATING TO CONSTRUCTION OR TO REGULATION AND CONTROL OF TRAFFIC MAY BE SUBJECT TO CHANGE AS DEEMED NECESSARY BY THE DEPARTMENT

REVISED	STATE	ROUTE	STATE	PROJECT	SHEET NO.
	VA.	708		0708-002-949, B612 RW201	X002

THESE PLANS ARE UNFINISHED AND ARE NOT TO BE USED FOR ANY TYPE OF CONSTRUCTION.



Route 708 over North Fork Hardware River  
Station 100+50.00 to Station 100+75.00

PROJECT MANAGER *Belan, Arnold (540) 829-7557*  
SURVEYED BY, DATE *D.F. Raynes*  
DESIGN BY *MofEatt & Nicol (804) 320-1996*  
SUBSURFACE UTILITY BY, DATE *D.F. Raynes*

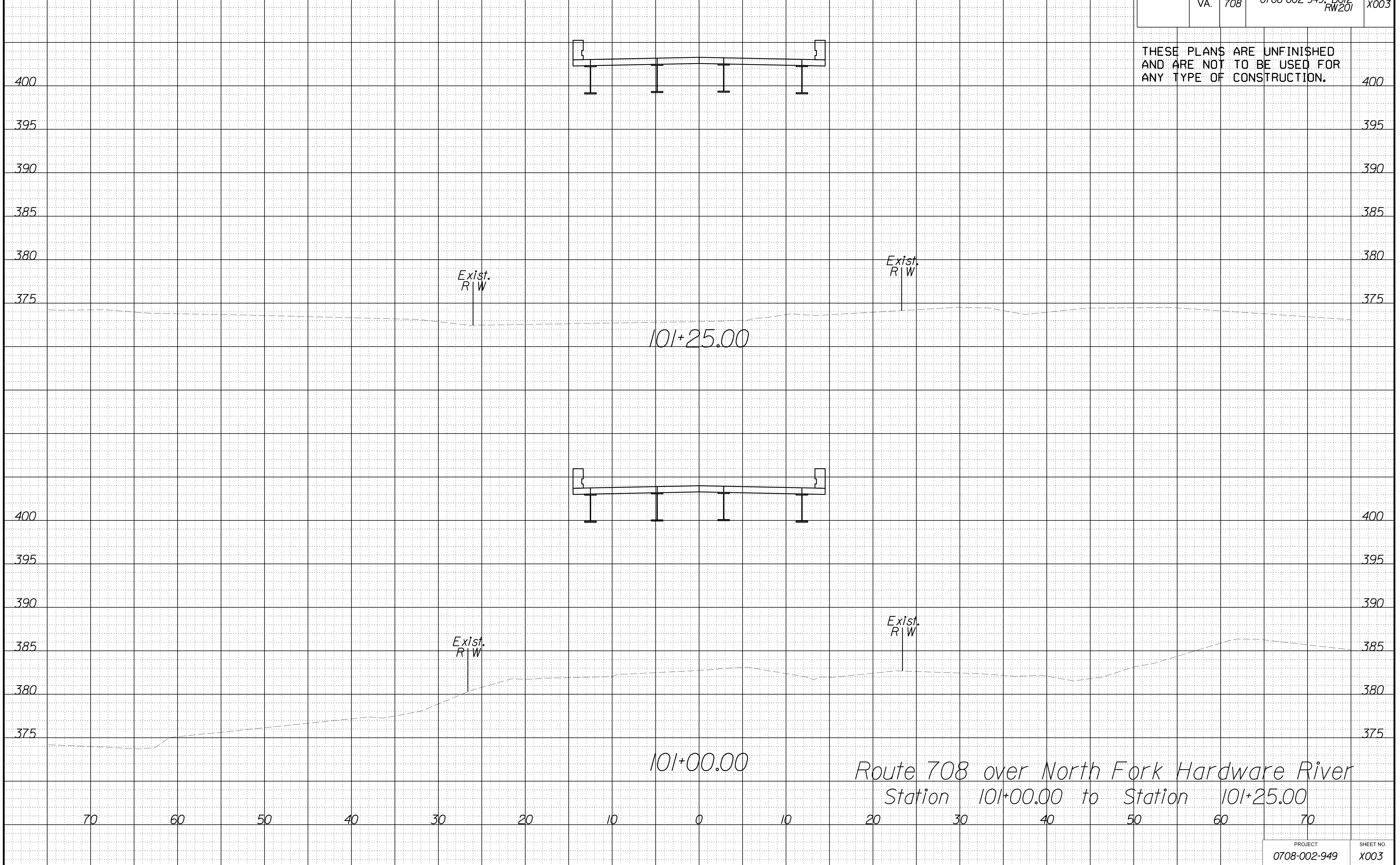
### CROSS SECTIONS

SCALE 1 IN. = 5 FT

DESIGN FEATURES RELATING TO CONSTRUCTION  
OR TO REGULATION AND CONTROL OF TRAFFIC  
MAY BE SUBJECT TO CHANGE AS DEEMED  
NECESSARY BY THE DEPARTMENT

REVISED	STATE	ROUTE	STATE	PROJECT	SHEET NO.
	VA.	708		0708-002-949, B612 RW201	X003

THESE PLANS ARE UNFINISHED  
AND ARE NOT TO BE USED FOR  
ANY TYPE OF CONSTRUCTION.



PROJECT MANAGER *Belan, Arnold (540) 829-7557*  
SURVEYED BY, DATE *D.F. Raynes*  
DESIGN BY *Matt & Nichol (804) 320-1996*  
SUBSURFACE UTILITY BY, DATE *D.F. Raynes*

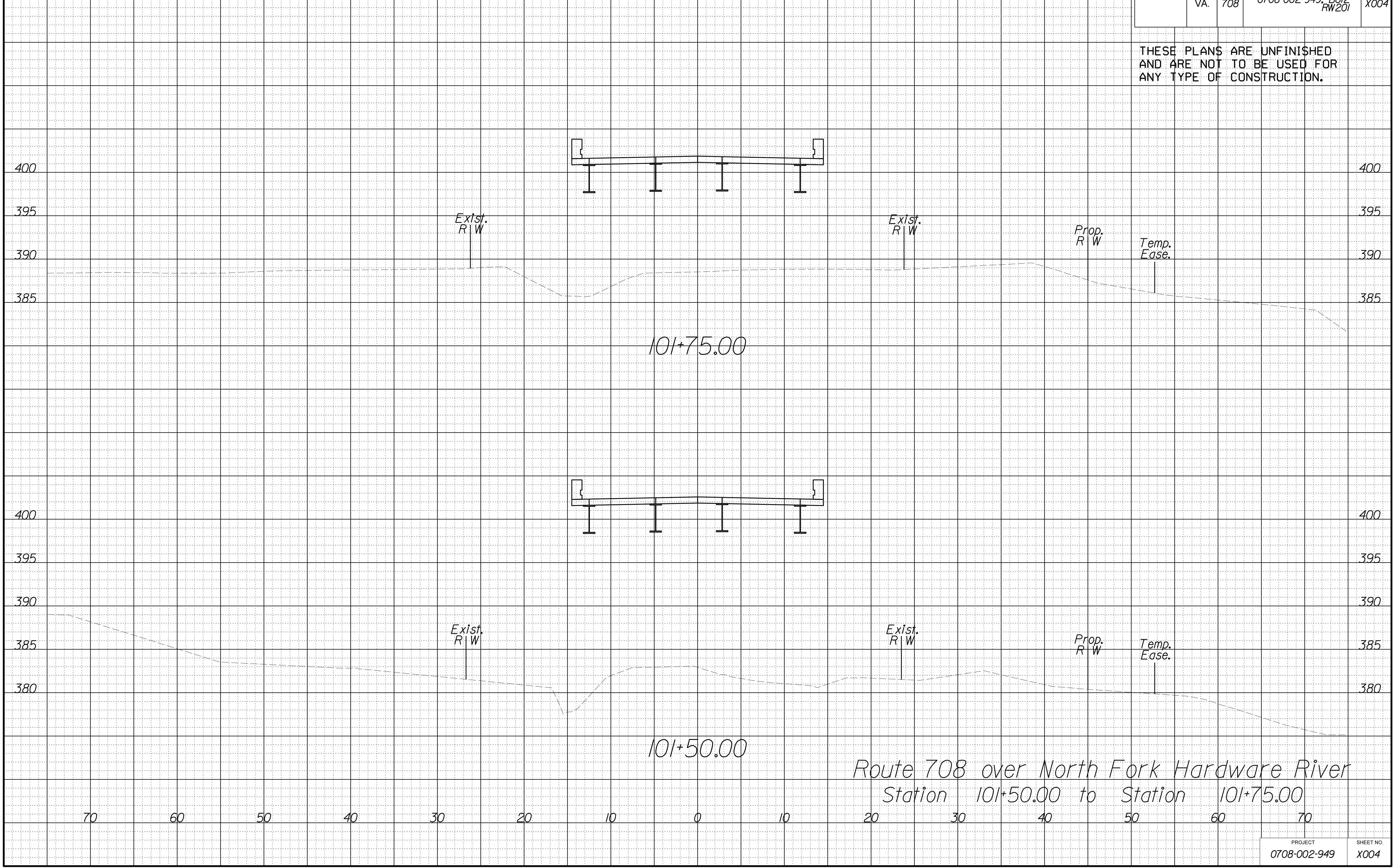
### CROSS SECTIONS

SCALE 1 IN. = 5 FT

DESIGN FEATURES RELATING TO CONSTRUCTION OR TO REGULATION AND CONTROL OF TRAFFIC MAY BE SUBJECT TO CHANGE AS DEEMED NECESSARY BY THE DEPARTMENT

REVISED	STATE	ROUTE	STATE	PROJECT	SHEET NO.
	VA.	708		0708-002-949, B612 RW201	X004

THESE PLANS ARE UNFINISHED AND ARE NOT TO BE USED FOR ANY TYPE OF CONSTRUCTION.



Route 708 over North Fork Hardware River  
Station 101+50.00 to Station 101+75.00

PROJECT MANAGER *Brian Arnold (540) 829-7557*  
SURVEYED BY, DATE *D.F. Raynes*  
DESIGN BY *Matt & Nichol (804) 320-1996*  
SUBSURFACE UTILITY BY, DATE *D.F. Raynes*

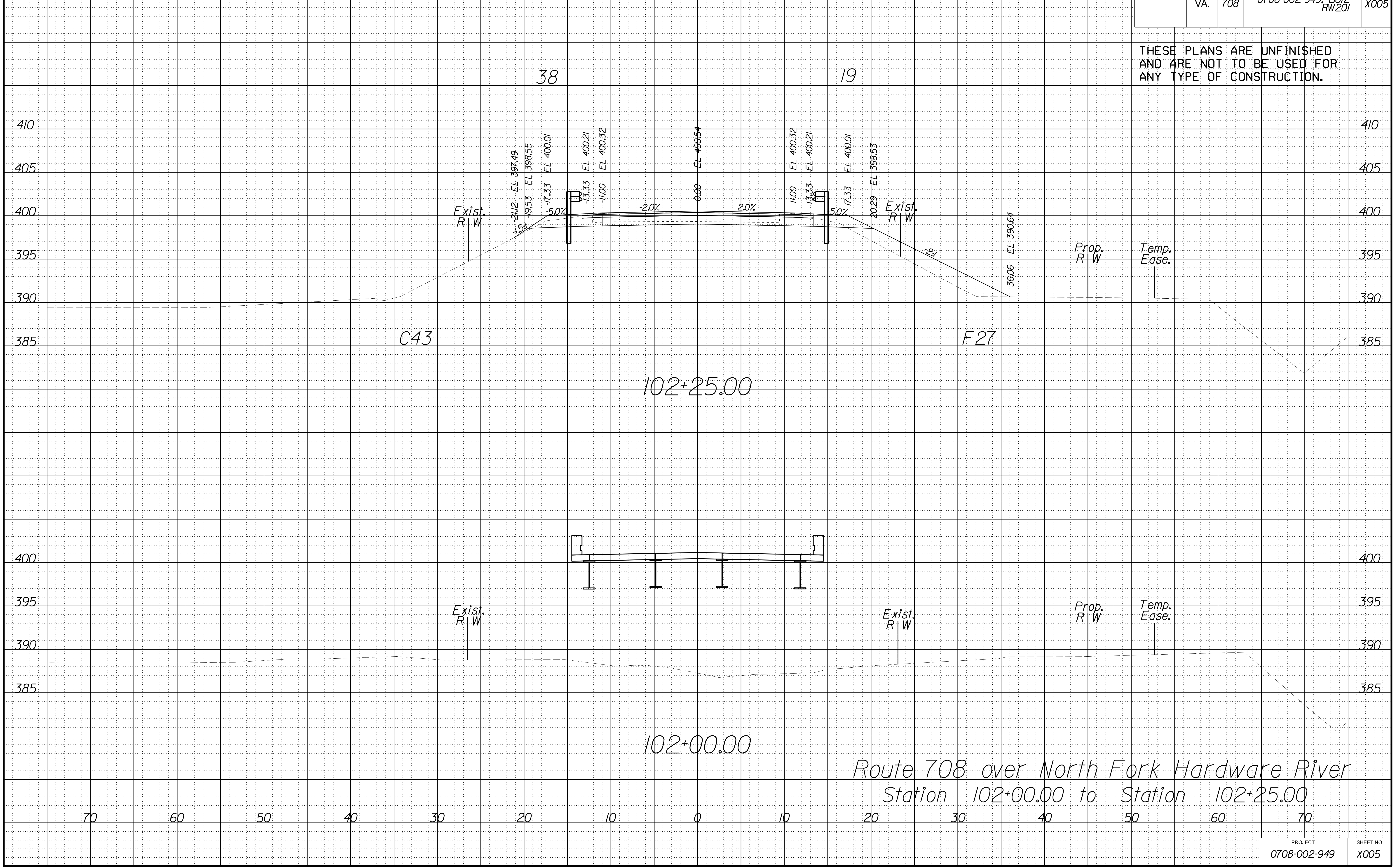
### CROSS SECTIONS

SCALE 1 IN. = 5 FT

DESIGN FEATURES RELATING TO CONSTRUCTION OR TO REGULATION AND CONTROL OF TRAFFIC MAY BE SUBJECT TO CHANGE AS DEEMED NECESSARY BY THE DEPARTMENT

REVISED	STATE	ROUTE	STATE	PROJECT	SHEET NO.
	VA.	708		0708-002-949, B612 RW201	X005

THESE PLANS ARE UNFINISHED AND ARE NOT TO BE USED FOR ANY TYPE OF CONSTRUCTION.



Route 708 over North Fork Hardware River  
Station 102+00.00 to Station 102+25.00

PROJECT MANAGER *Brian Arnold (540) 829-7557*  
SURVEYED BY, DATE *D.F. Raynes*  
DESIGN BY *McEatt & Nichol (804) 320-1996*  
SUBSURFACE UTILITY BY, DATE *D.F. Raynes*

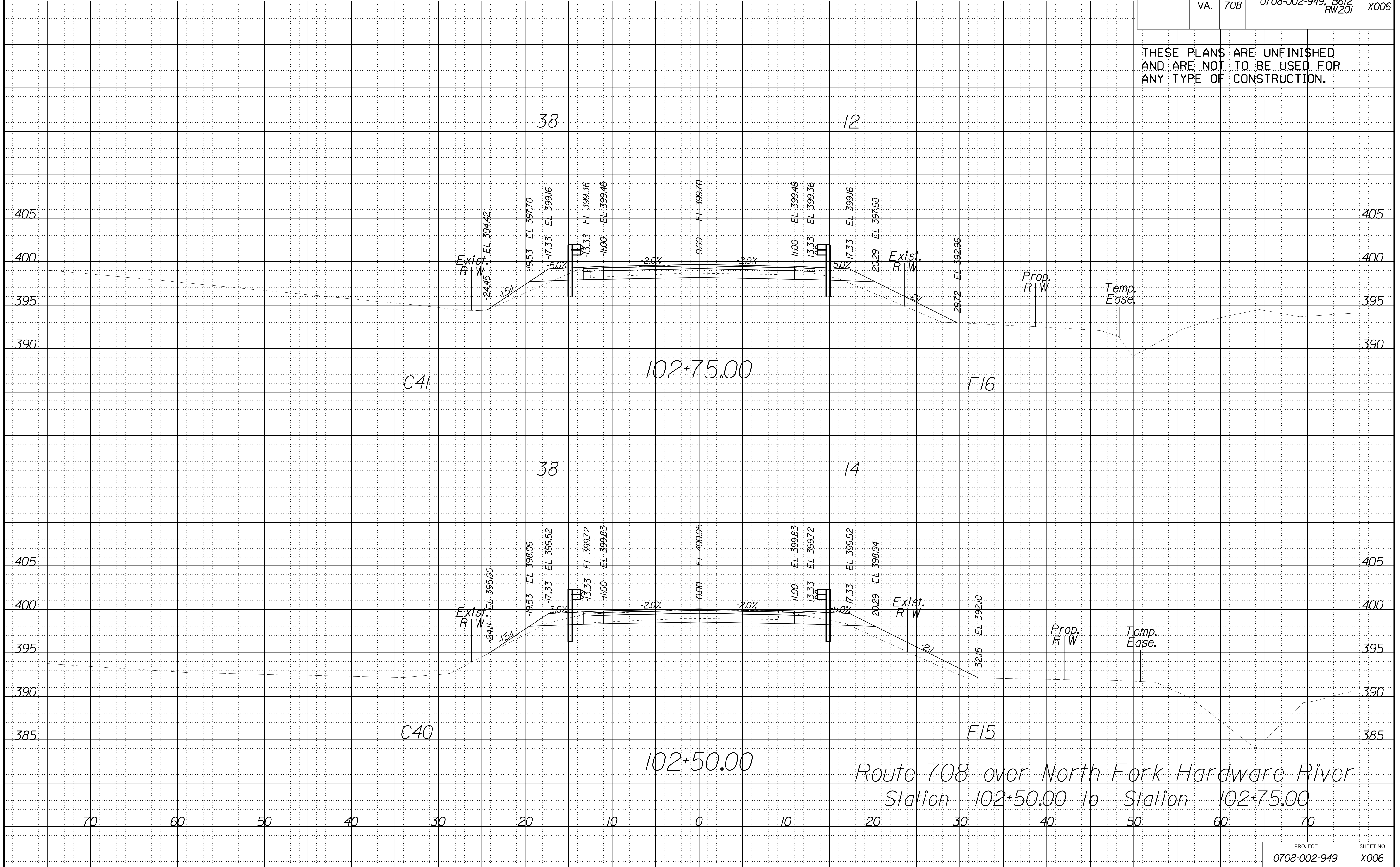
### CROSS SECTIONS

SCALE 1 IN. = 5 FT

DESIGN FEATURES RELATING TO CONSTRUCTION OR TO REGULATION AND CONTROL OF TRAFFIC MAY BE SUBJECT TO CHANGE AS DEEMED NECESSARY BY THE DEPARTMENT

REVISED	STATE	ROUTE	STATE	PROJECT	SHEET NO.
	VA.	708		0708-002-949, B612 RW201	X006

THESE PLANS ARE UNFINISHED AND ARE NOT TO BE USED FOR ANY TYPE OF CONSTRUCTION.



Route 708 over North Fork Hardware River  
Station 102+50.00 to Station 102+75.00

PROJECT MANAGER *Brian Arnold* (540) 829-7557  
SURVEYED BY, DATE *D.F. Raynes*  
DESIGN BY *McEatt & Nicol* (804) 320-1996  
SUBSURFACE UTILITY BY, DATE *D.F. Raynes*

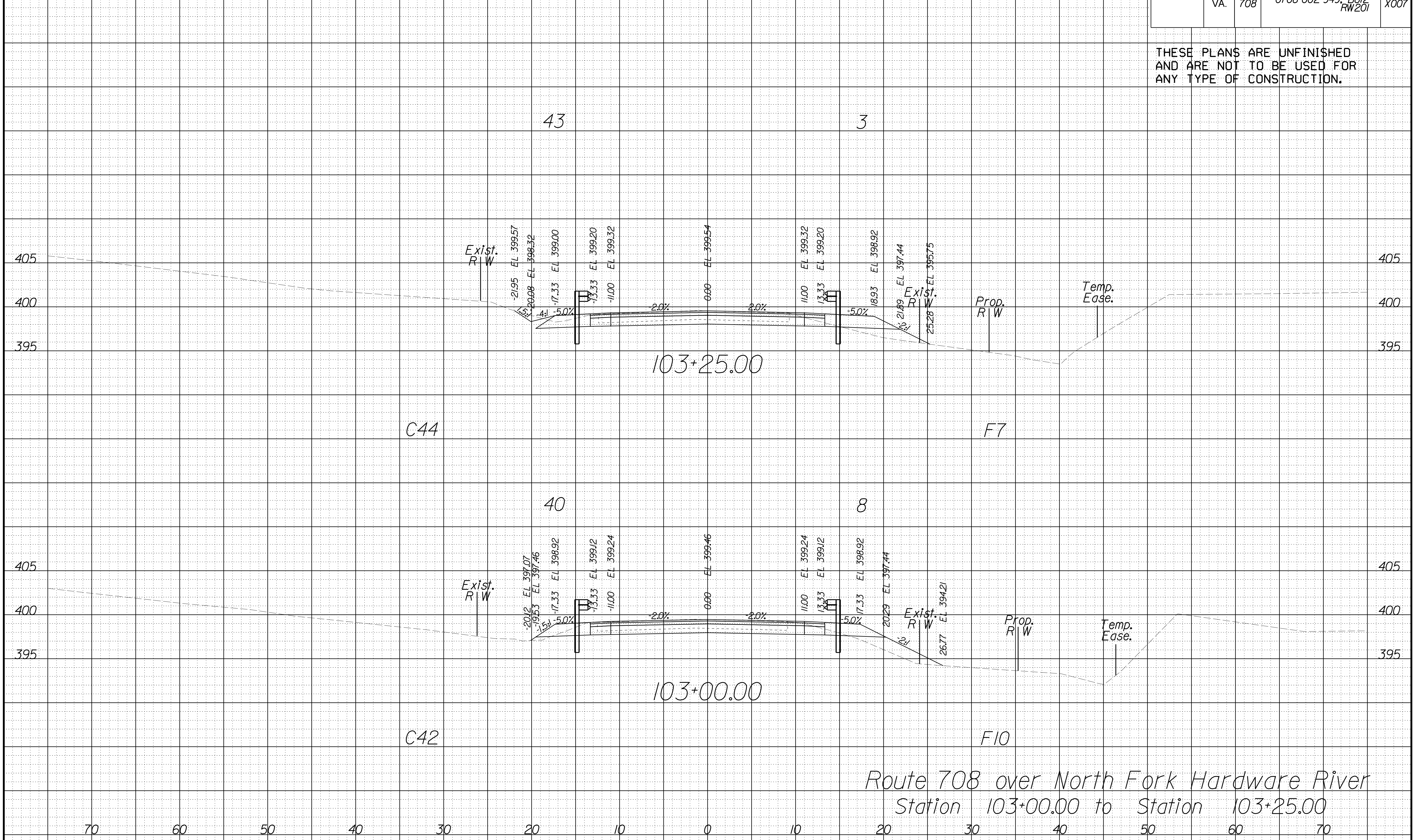
### CROSS SECTIONS

SCALE 1 IN. = 5 FT

DESIGN FEATURES RELATING TO CONSTRUCTION OR TO REGULATION AND CONTROL OF TRAFFIC MAY BE SUBJECT TO CHANGE AS DEEMED NECESSARY BY THE DEPARTMENT

REVISED	STATE	ROUTE	STATE	PROJECT	SHEET NO.
	VA.	708		0708-002-949, B612 RW201	X007

THESE PLANS ARE UNFINISHED AND ARE NOT TO BE USED FOR ANY TYPE OF CONSTRUCTION.



Route 708 over North Fork Hardware River  
Station 103+00.00 to Station 103+25.00





PROJECT MANAGER *Brian Arnold (540) 829-7557*  
SURVEYED BY, DATE *D.F. Raynes*  
DESIGN BY *Matt & Nichol (804) 320-1996*  
SUBSURFACE UTILITY BY, DATE *D.F. Raynes*

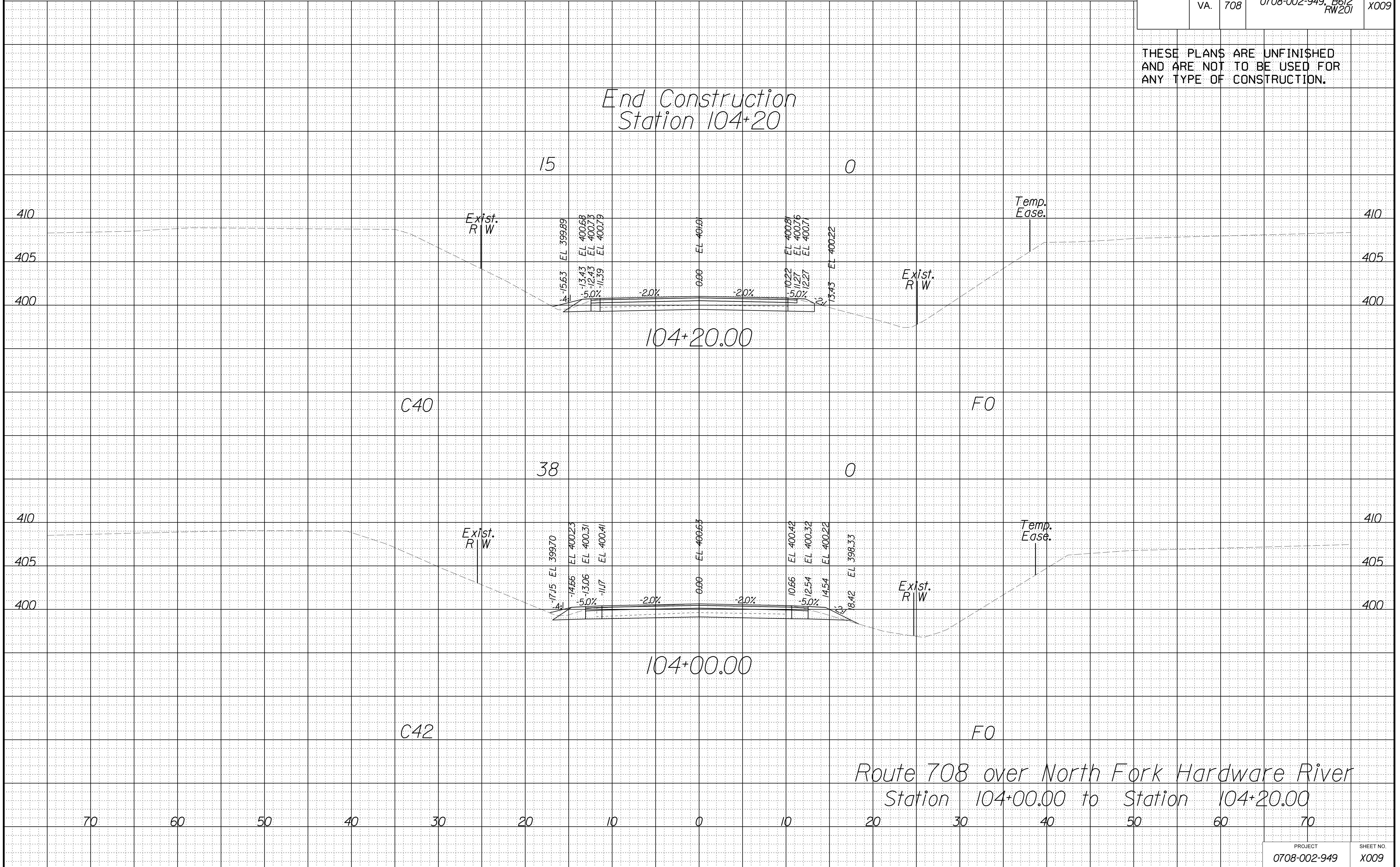
### CROSS SECTIONS

SCALE 1 IN. = 5 FT

DESIGN FEATURES RELATING TO CONSTRUCTION OR TO REGULATION AND CONTROL OF TRAFFIC MAY BE SUBJECT TO CHANGE AS DEEMED NECESSARY BY THE DEPARTMENT

REVISED	STATE	ROUTE	STATE	PROJECT	SHEET NO.
	VA.	708		0708-002-949, B612 RW201	X009

THESE PLANS ARE UNFINISHED AND ARE NOT TO BE USED FOR ANY TYPE OF CONSTRUCTION.



PROJECT MANAGER: Brian Arnold (540) 829-7557 (Culpeper District)  
SURVEYED BY, DATE: D.E. Raynes (540) 828-7562 (Culpeper District)  
DESIGN BY: Barry Lloyd, P.E. (804) 320-1996 (Moffatt & Nichol)  
SUBSURFACE UTILITY BY, DATE: D.E. Raynes (540) 828-7562 (Culpeper District)

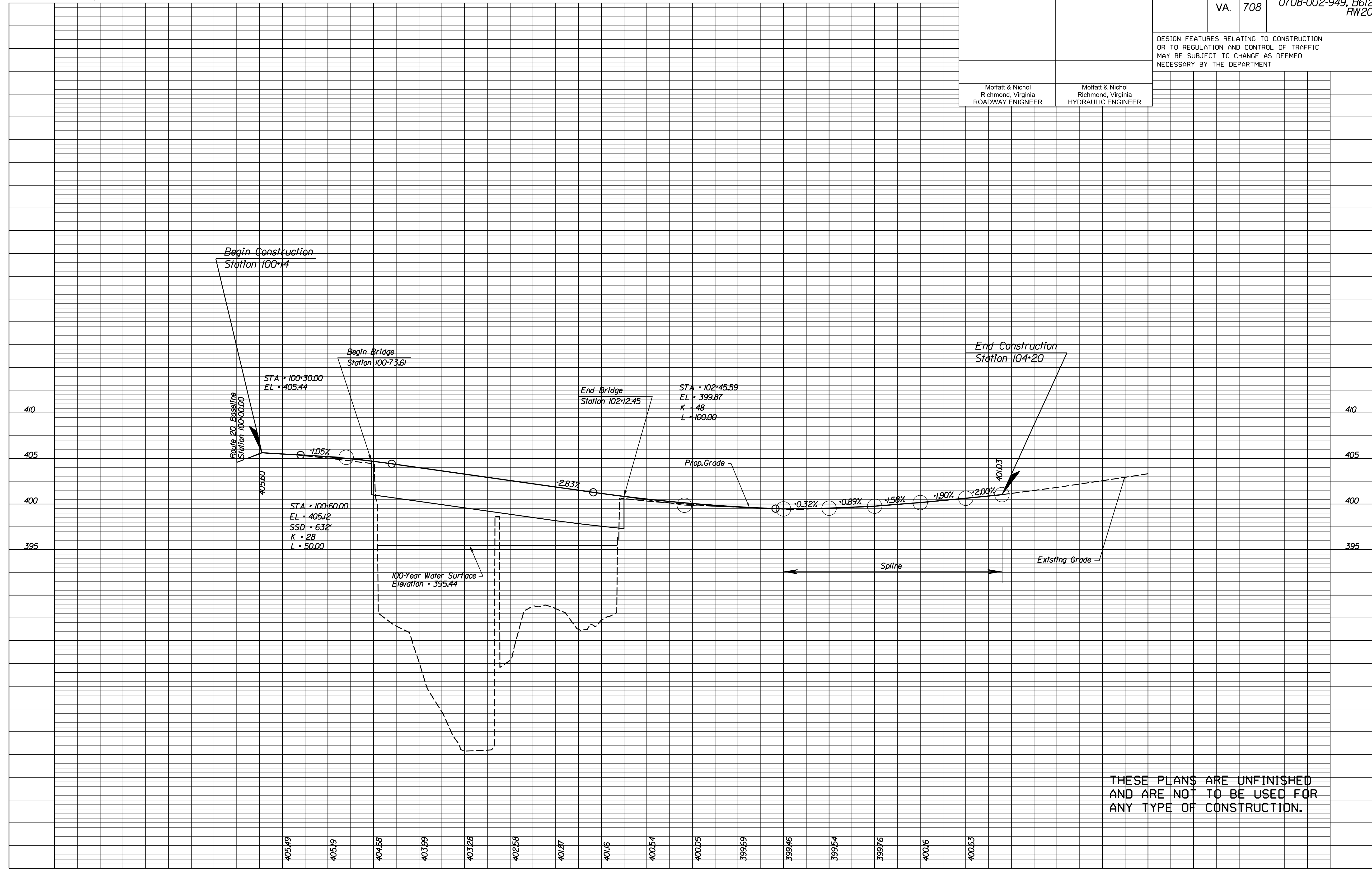
REVISED	STATE	ROUTE	STATE	PROJECT	SHEET NO.
	VA.	708		0708-002-949, B612, RW201	

DESIGN FEATURES RELATING TO CONSTRUCTION OR TO REGULATION AND CONTROL OF TRAFFIC MAY BE SUBJECT TO CHANGE AS DEEMED NECESSARY BY THE DEPARTMENT

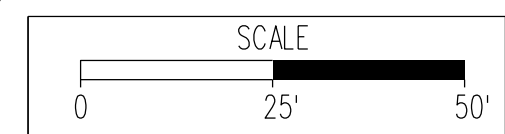
Moffatt & Nichol  
Richmond, Virginia  
ROADWAY ENGINEER

Moffatt & Nichol  
Richmond, Virginia  
HYDRAULIC ENGINEER

CULPEPER DISTRICT DESIGN UNIT



THESE PLANS ARE UNFINISHED AND ARE NOT TO BE USED FOR ANY TYPE OF CONSTRUCTION.



PROJECT: 0708-002-949  
SHEET NO.: 40(HH)