

# Building Services

---

Summer Update 2022

# Strategic Plan and Facility Improvements

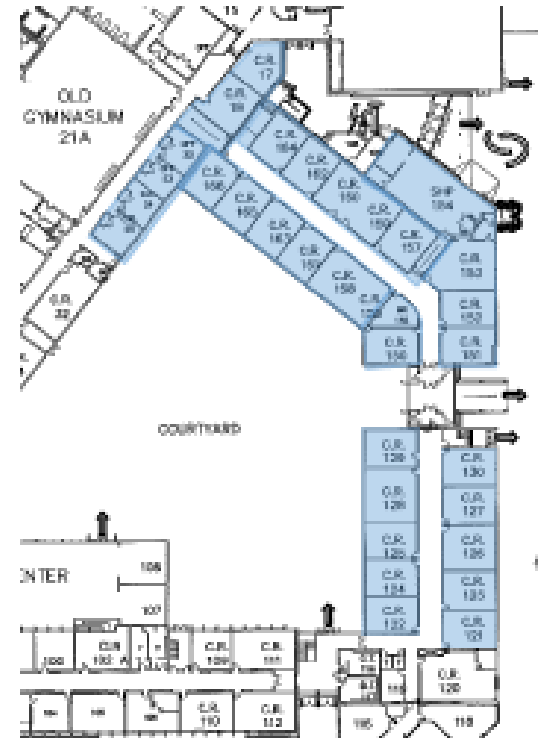
## Goal 3: Equitable, Transformative Resources

ACPS will attract, develop, and retain the highest quality staff; develop sustainable and modern facilities, infrastructure, and equipment; and distribute all resources in an equitable manner to transform learning experiences and opportunities.

# Summer Project Video

[Video Link](#)

# Albemarle High School HVAC



# Other HVAC Projects

## Air Handler Replacements

- Woodbrook Elementary
- Stony Point Elementary

## Henley and Journey Tech Lab HVAC Upgrades



# 2nd Grade Furniture

Modernized and flexible 2nd grade furniture added to each elementary school





## Greer Walk-in Cooler/Freezer



New kitchen equipment  
installed at Greer  
Elementary

# Generator Installations

- Agnor-Hurt
- Greer
- Journey
- Community Lab





# Greer Elevator

Renovation to Greer Elementary's elevator, providing updated electrical components



# Painting and Flooring Updates

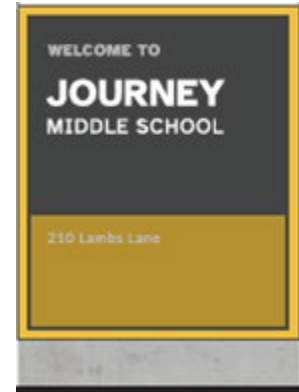




# Signage Updates

Updated roadside and internal signs for several schools, including:

- Mountain View Elementary
- Journey Middle School
- Lakeside Middle School
- Community Lab School



# Paving and Sidewalk Repairs

Repaired and renovated asphalt and sidewalks across the division





# Trailer Removal

- Scottsville Elementary (4-classroom pod)
- Red Hill Elementary (2-classroom pod)
- Mountain View Elementary (2-classroom, single classroom)
- Brownsville Elementary (2-classroom)



# NIFI/Safe Routes to School

Side walk between AHS to Journey Middle School - expected completion in October





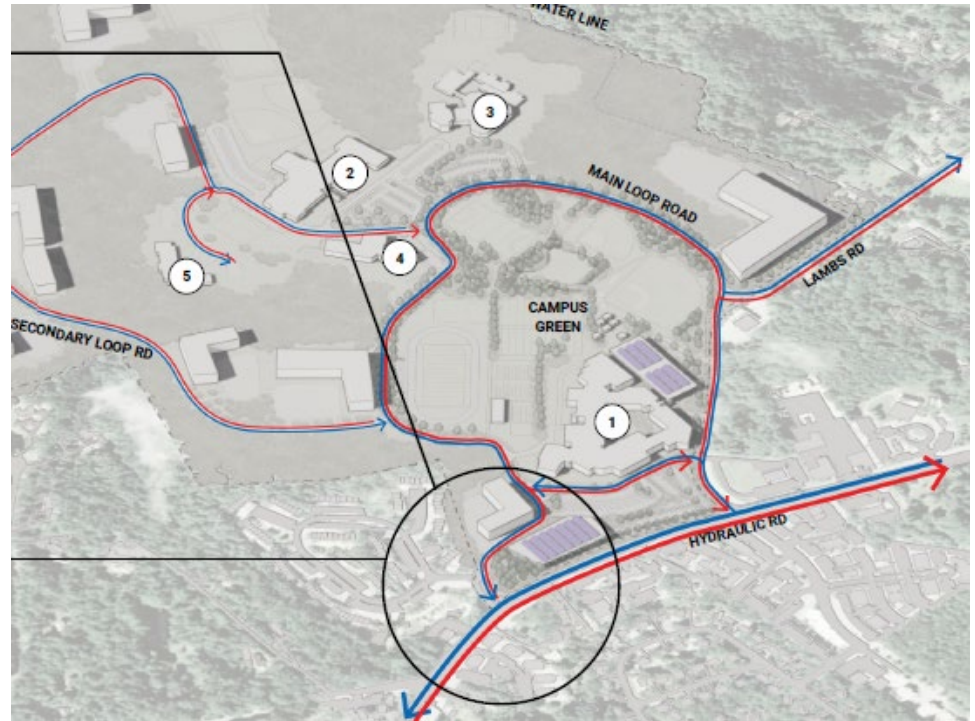
# Master Plans

## Lambs Lane

- DLR Group
- Developed a phased plan of short and long term recommendations for the future direction of the Lambs Lane Campus

## AHS/WHS Study

- Quinn Evans Architects
- Conducted a physical assessment of the campuses and interviewed stakeholders to develop recommendations on future capital improvements for each school



# Acknowledgements

## Building Services

---

Matt Wertman  
Jeff Rohm  
David Via  
Caitlyn Wetzel  
Lisa Walker  
Sheila Hoopman  
Pam Snyder  
Stephanie Rose

## Facilities Planning & Construction

---

Blake Abplanalp  
Tyler Gifford  
Montie Breeden  
Walter Harris  
Steve Hoffmann  
Dahris Garcia

# The ACPS Capital Team



Matt Wertman - Deputy  
Director

Gerald Harris - Senior PM

James Allen - PM/PI

Kagan Squire - PM/PI

Caitlyn Wetzel -  
Management Analyst II



Albemarle County  
Public Schools

---

Building Services

THANK YOU FOR YOUR  
SUPPORT!