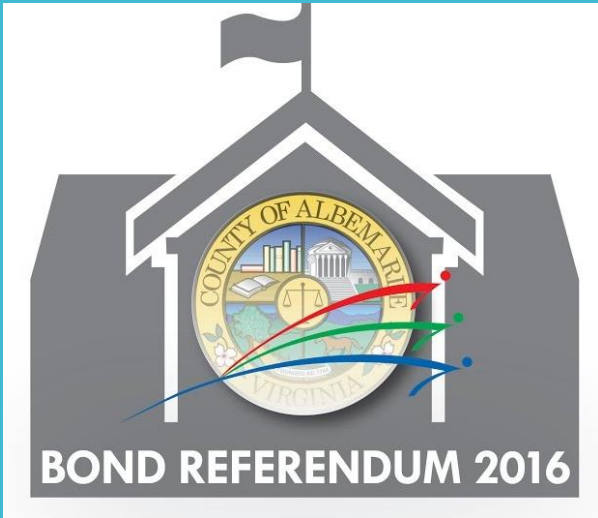


BOND REFERENDUM 2016 PROJECTS (2nd Year)

Security Additions and Repurposing of Office Spaces, Science Lab, Classroom and Media Center Modernizations



COMPLETE

- **Modernization Work**
 - Albemarle
 - Western Albemarle
 - Jouett
 - Walton
- **Furniture Upgrades**
 - 4 Elementary schools (10 classrooms)



UNDER CONSTRUCTION

- **Security Projects**
 - Baker-Butler
 - Scottsville
- **Addition & Modernization Work**
 - Woodbrook



IN DESIGN

- **Addition & Modernization Work**
 - Western Albemarle
- **Modernization Work**
 - Albemarle
 - Burley
 - Sutherland
 - Henley
- **Security Projects**
 - Henley
 - Murray
- **Furniture Upgrades**
 - 13 Elementary schools (46 classrooms)
 - 2 High Schools (14 classrooms)

Schedule

(Projects Currently in Design)

- **Design: September – January**
 - October 12: Schematic Design Info
 - October 26: Schematic Design Action
 - November 9: Design Development Info
 - December 14: Design Development Action
- **Bid: February – March**
- **Construction: Begin June 2018**
 - Modernization projects complete August 2018
 - Security projects complete December 2018
 - Western Addition complete August 2019

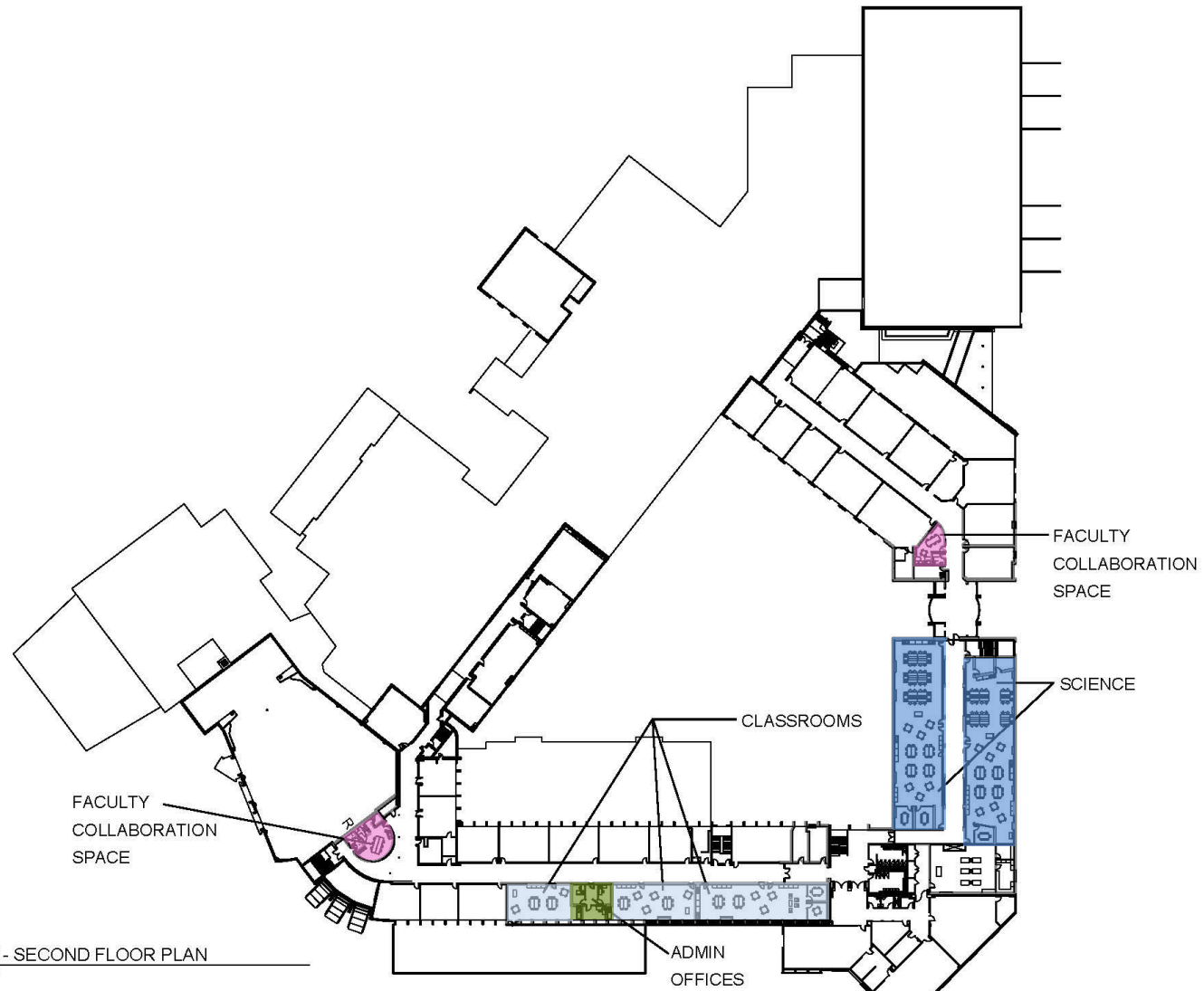
ALBEMARLE HIGH SCHOOL

Science Lab and
Classroom Modernization

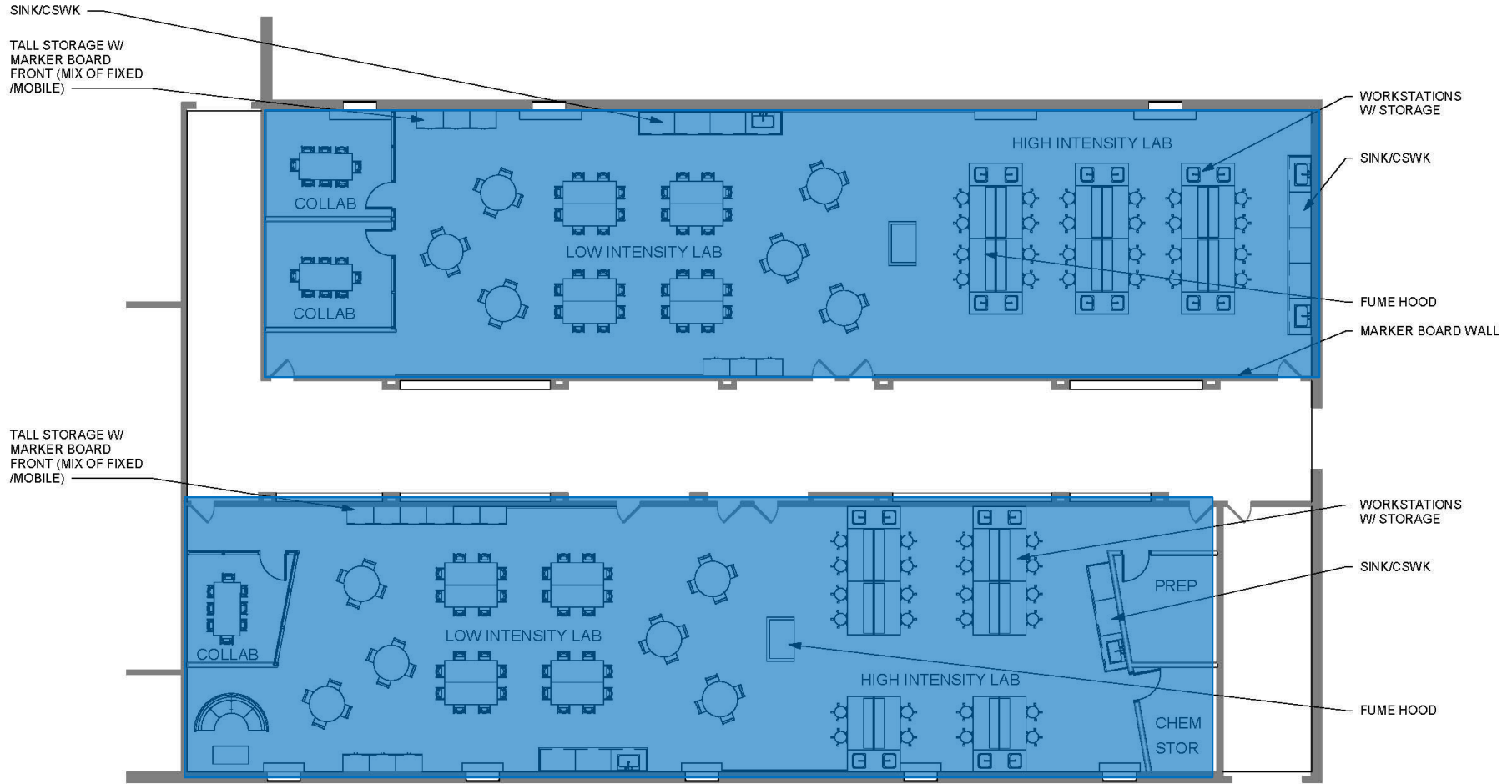
BCWH ARCHITECTS



1 Level 2 - SECOND FLOOR PLAN
1/8" = 1'-0"

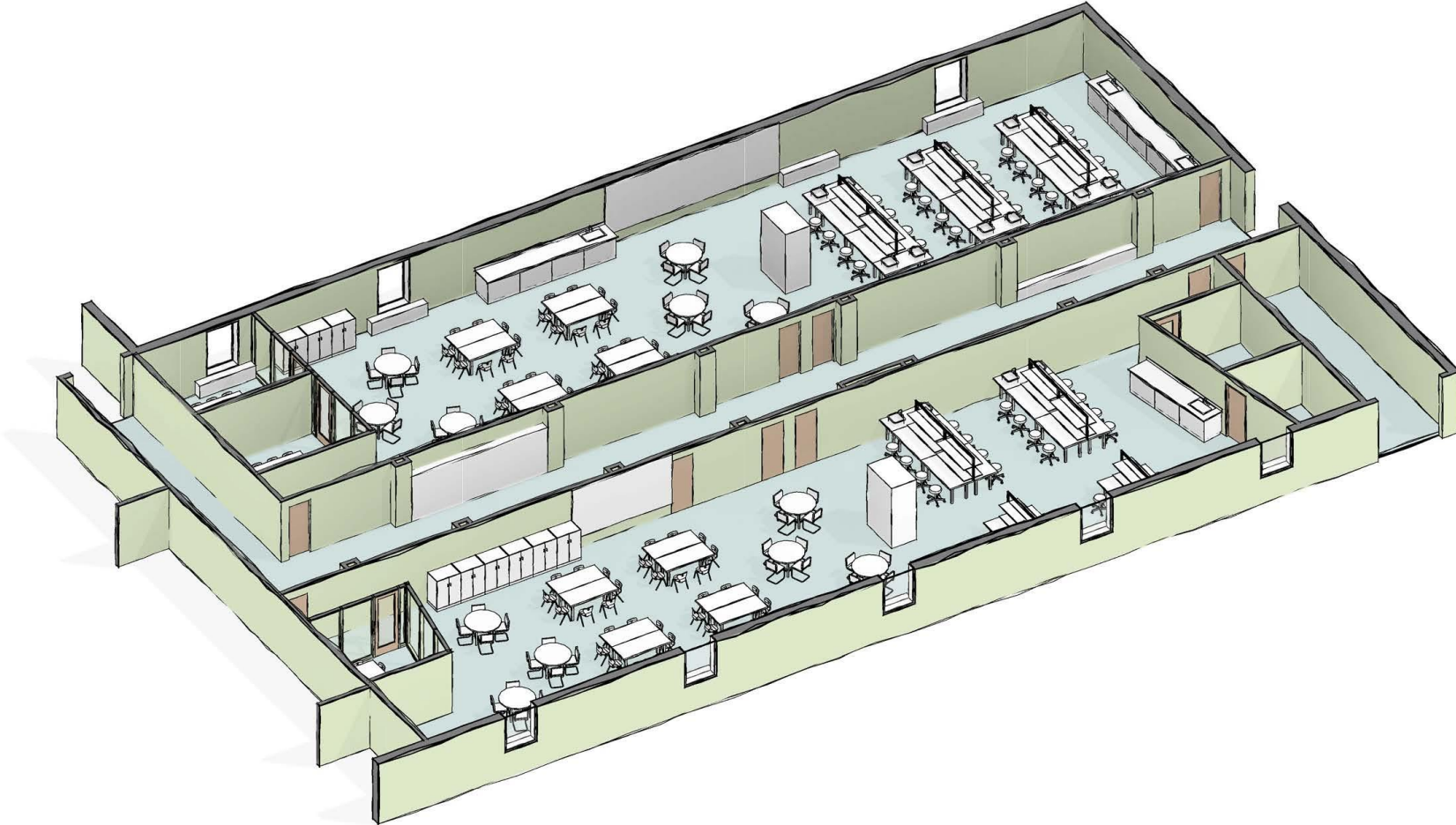


Albemarle High School



1 Level 2 - LEARNING LABS
3/32" = 1'-0"

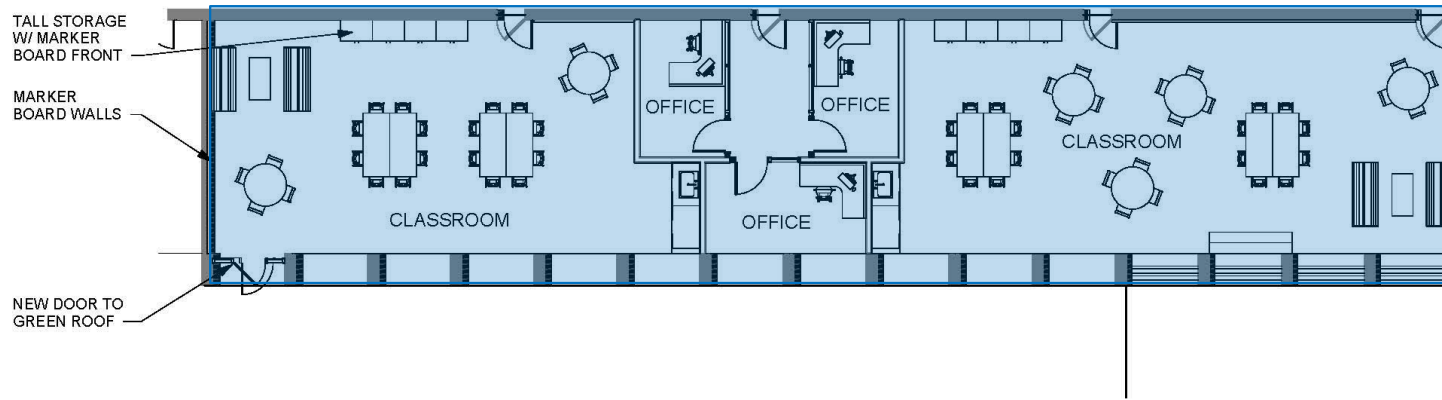




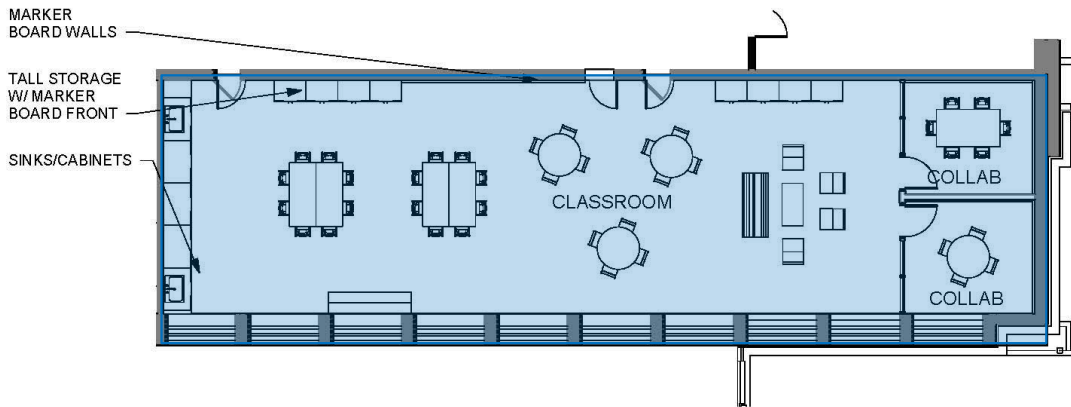
1 LEARNING LABS AXON



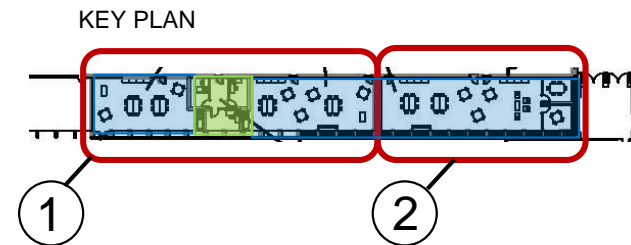
Albemarle High School



1 Level 2 - ROOMS 227-228, 230
3/32" = 1'-0"



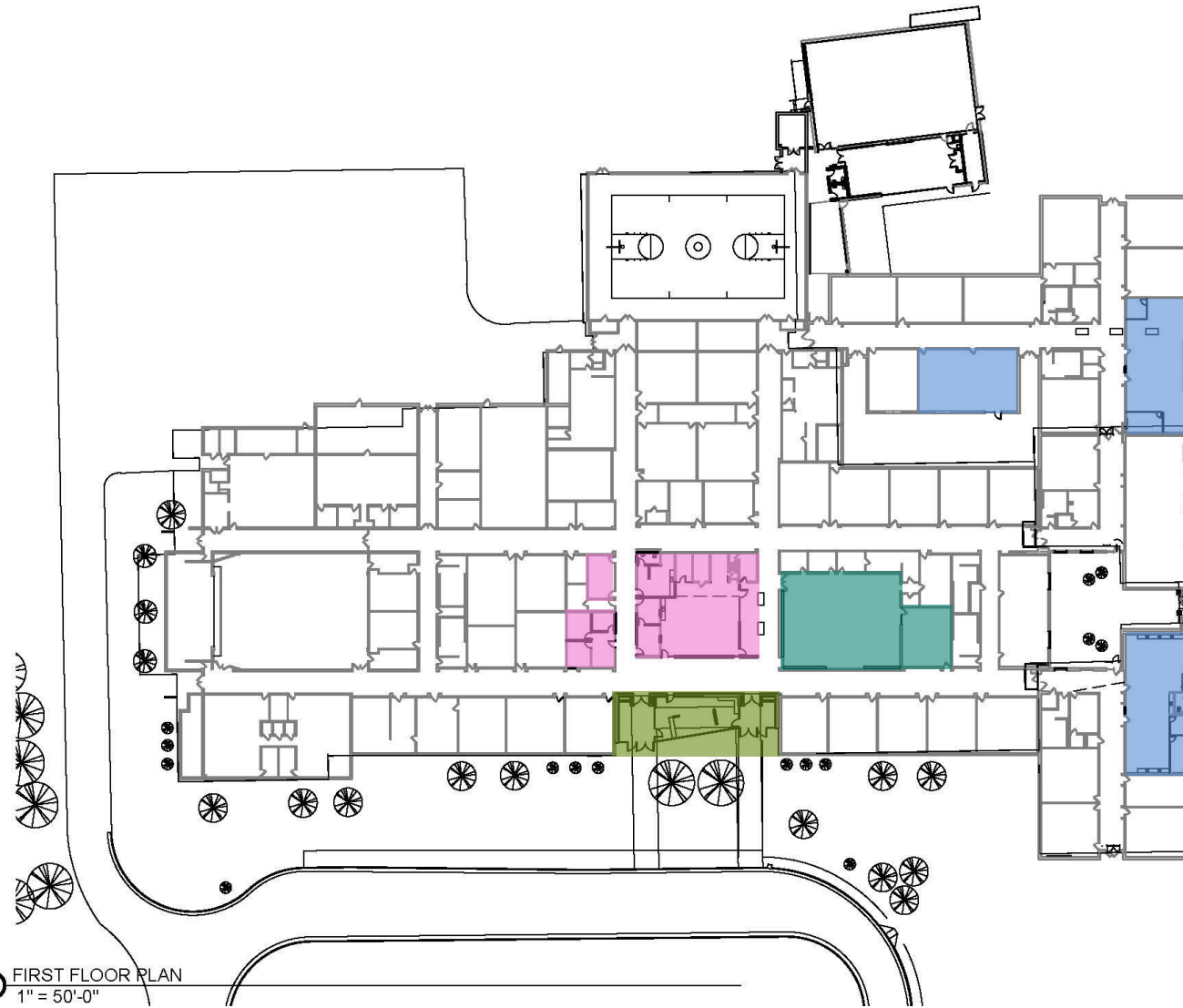
2 Level 2 - ROOMS 233, 235-238
3/32" = 1'-0"



HENLEY MIDDLE SCHOOL

Security Addition and
Repurposing of Office
Space, Science Lab,
Classroom and Media
Center Modernization

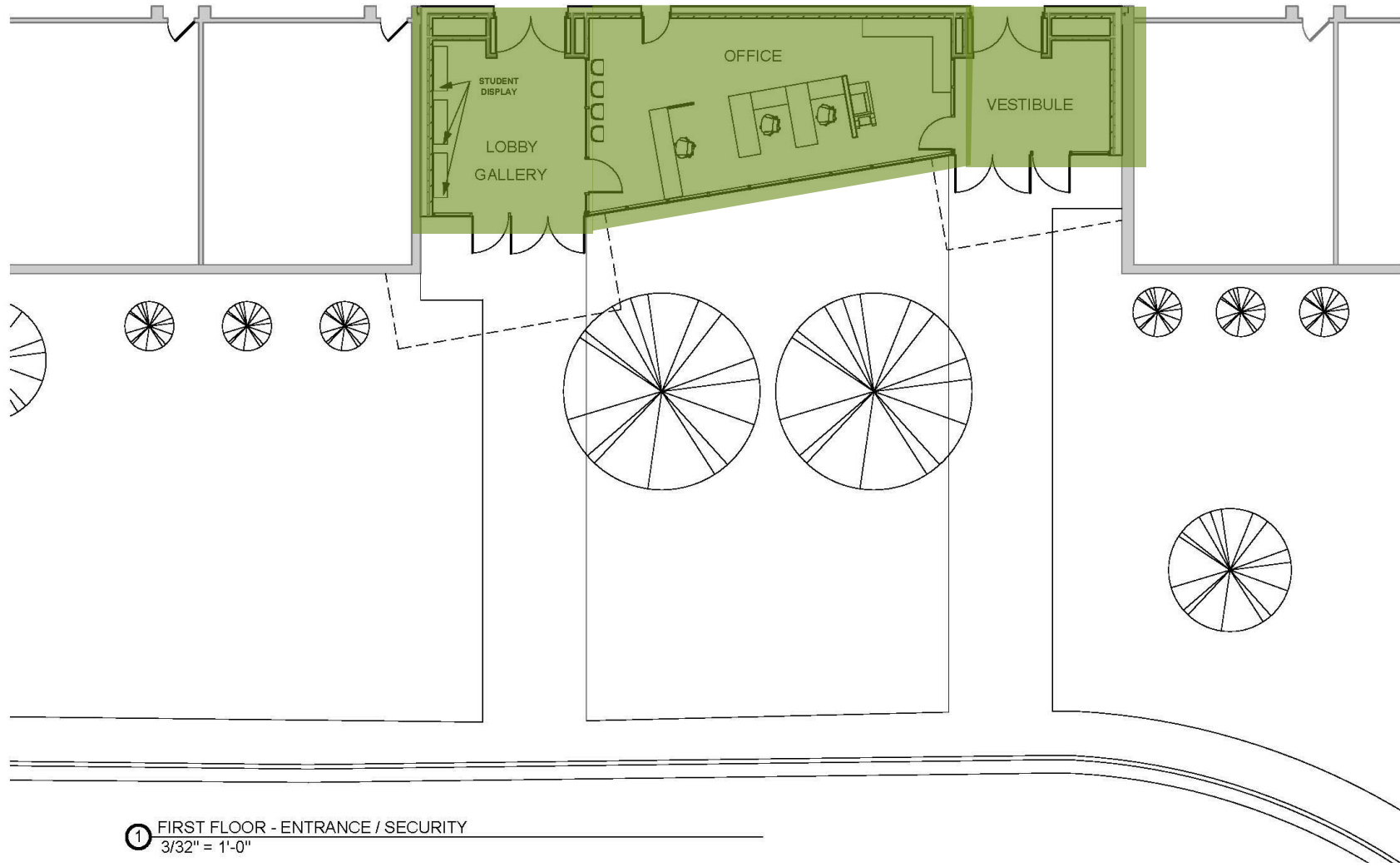
BCWH ARCHITECTS



1 FIRST FLOOR PLAN
1" = 50'-0"



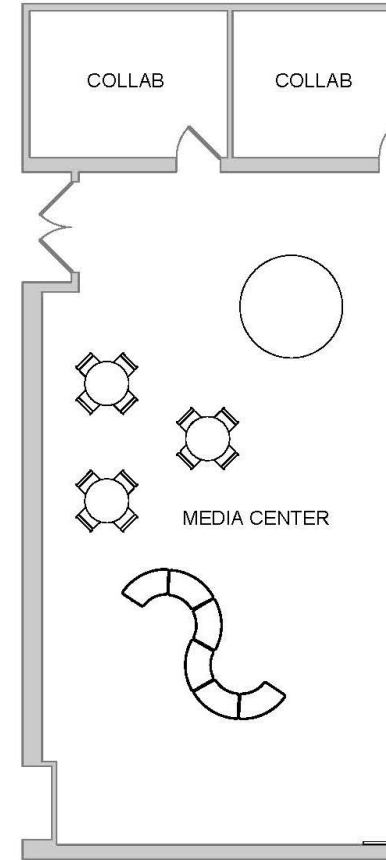
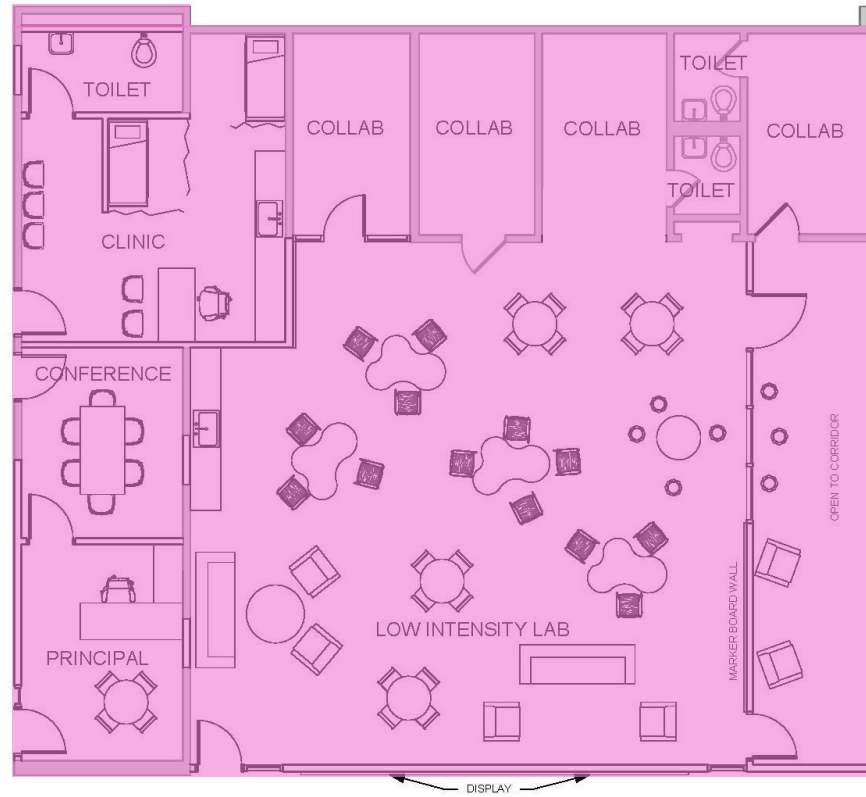
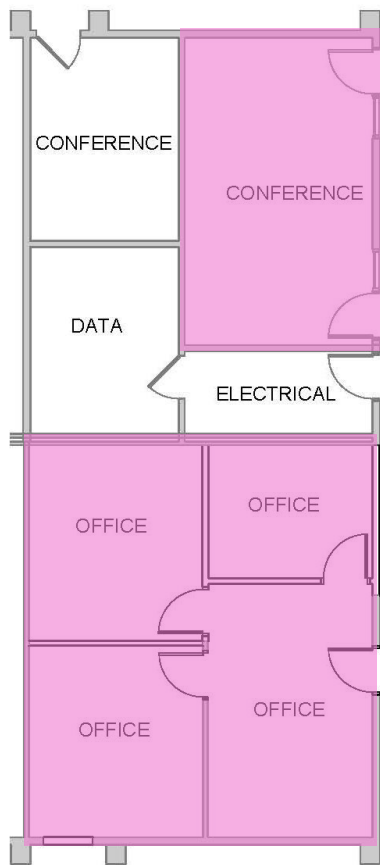
Henley Middle School



Henley Middle School



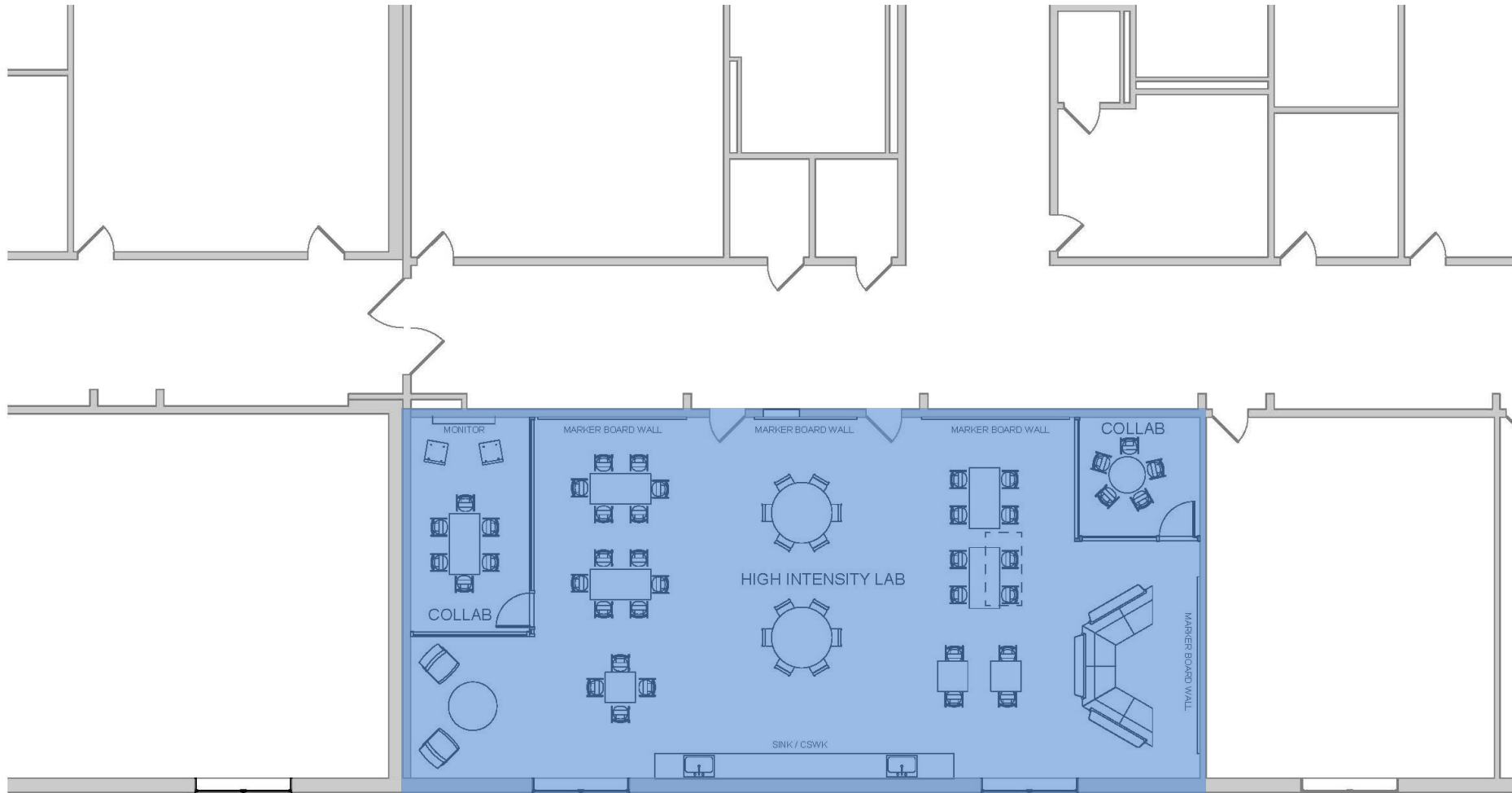
Henley Middle School



① FIRST FLOOR - ADMIN & GUIDANCE
1/8" = 1'-0"



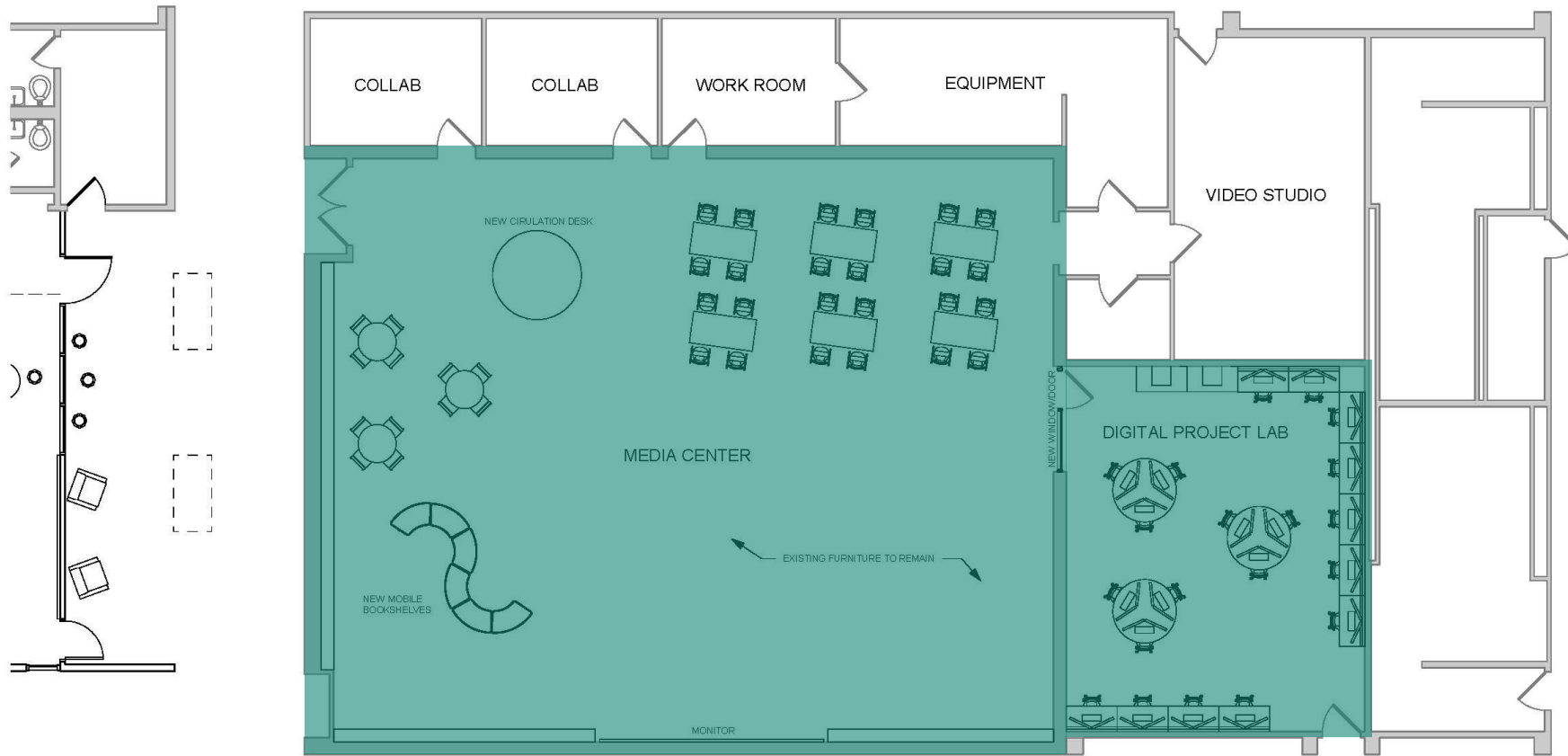
Henley Middle School



① FIRST FLOOR - LEARNING LAB D
 1/8" = 1'-0"



Henley Middle School



① FIRST FLOOR - MEDIA CENTER
 1/8" = 1'-0"



MURRAY HIGH SCHOOL

Security Vestibule and
Repurposing of Office
Space

GRIMM & PARKER
ARCHITECTS



- Administrative Spaces**
(#s indicate shared spaces)
- Nurse**
- High School**
- Middle School**
- Circulation**

COLLABORATION LOUNGE



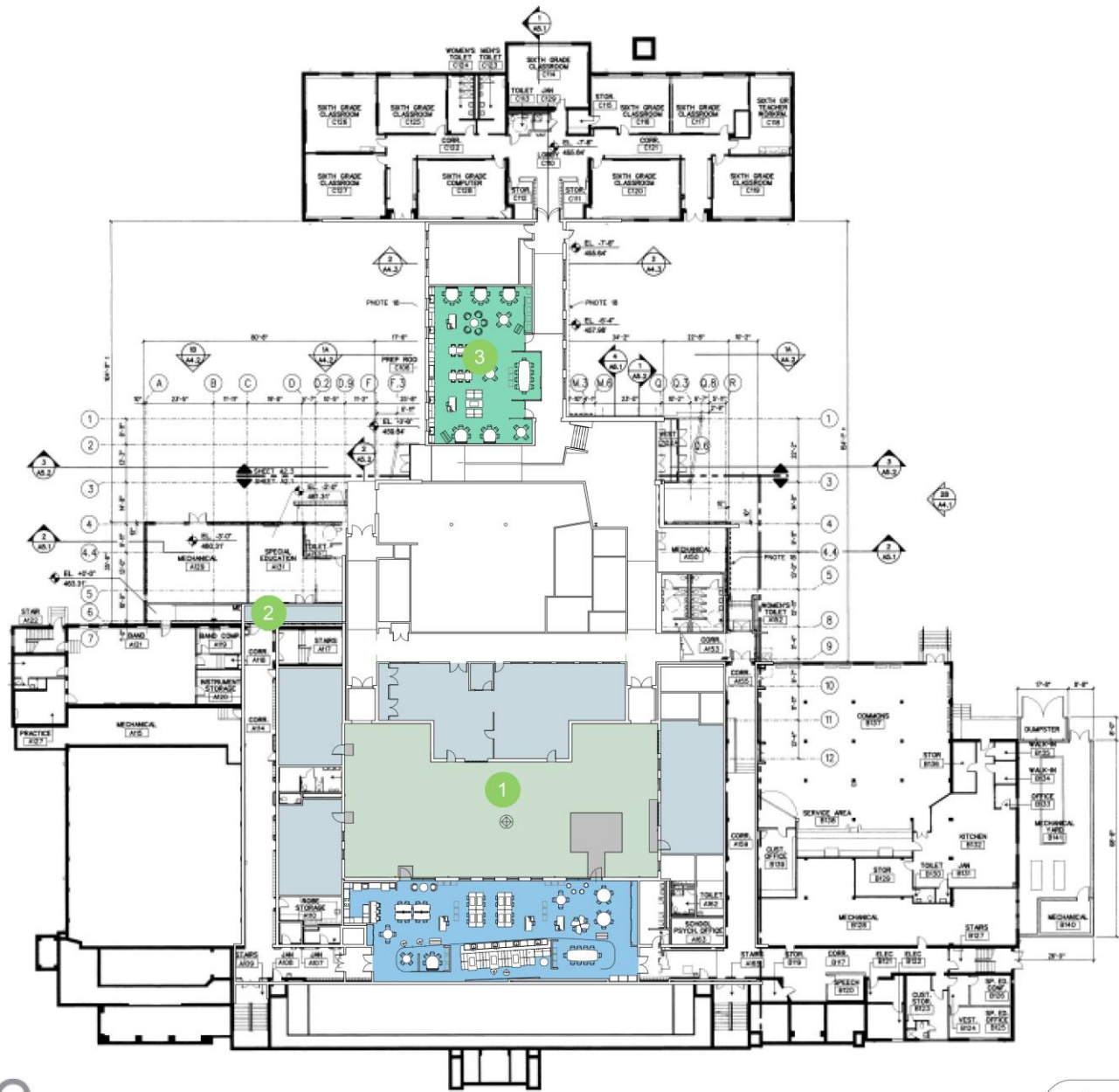
TECH COUNTER



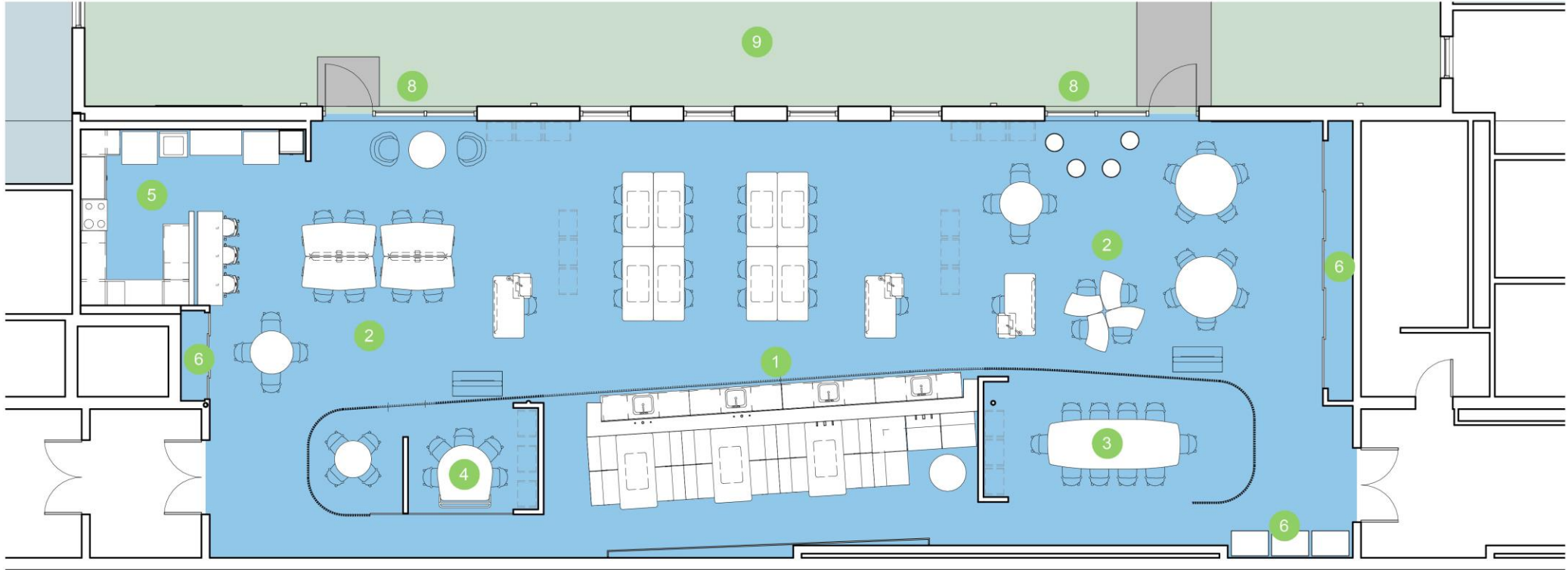
BURLEY MIDDLE SCHOOL

Science Lab and Classroom
Modernization

THRIVE ARCHITECTURE



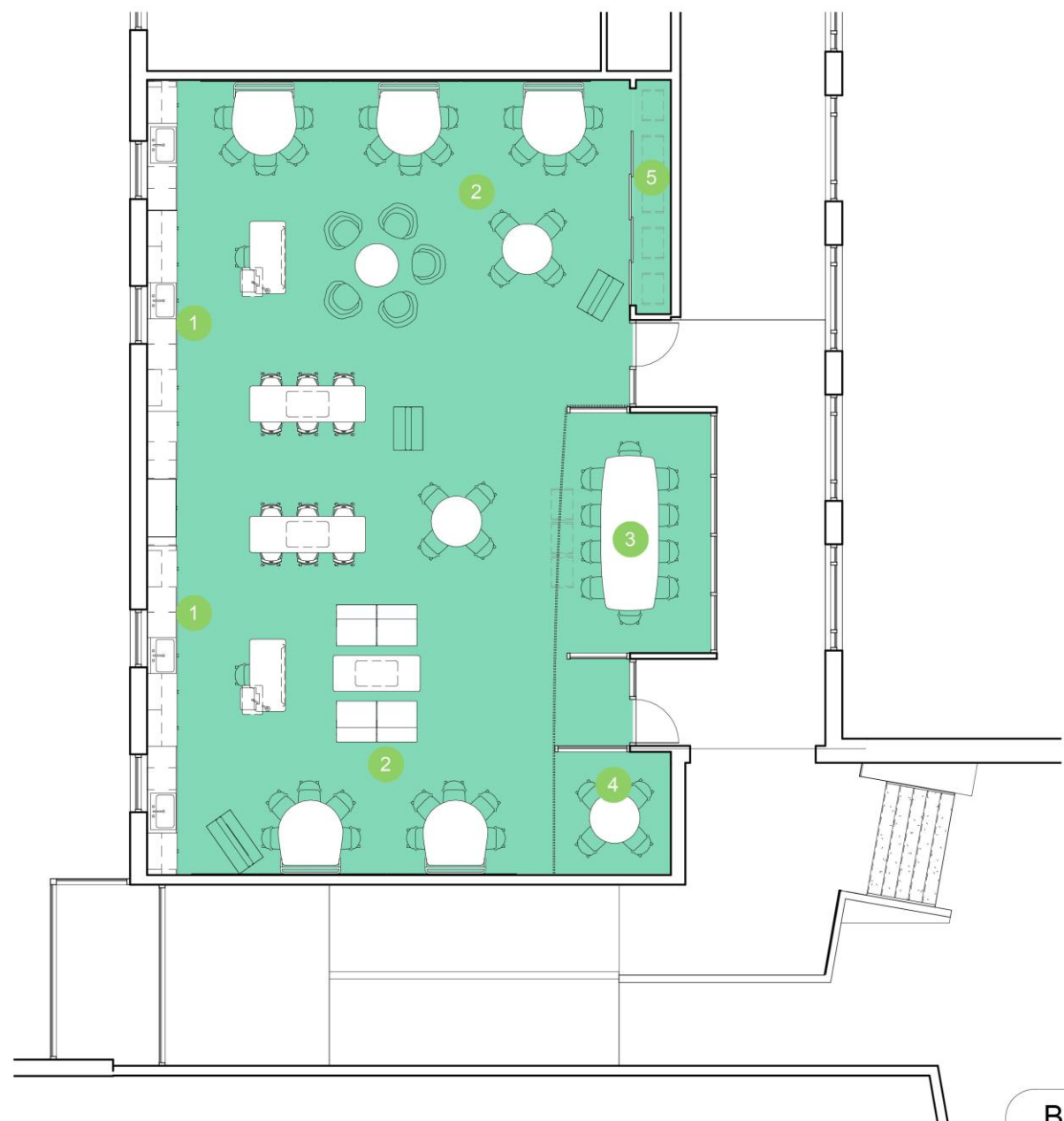
- 1 STEAM Ring
- 2 New Accessible Ramp
- 3 West Science Rooms



- 1 Intensive Science
- 2 Flexible Learning Space
- 3 Large Collaboration Space
- 4 Small Collaboration Space
- 5 Kitchen
- 6 Storage
- 7
- 8 New Exterior Openings
- 9 STEAM Courtyard



- 1 Intensive Science
- 2 Flexible Learning Space
- 3 Large Collaboration Space
- 4 Small Collaboration Space
- 5 Storage





SUTHERLAND MIDDLE SCHOOL

Science Lab, Classroom
and Media Center
Modernization

RRMM ARCHITECTS



FLOOR PLAN

