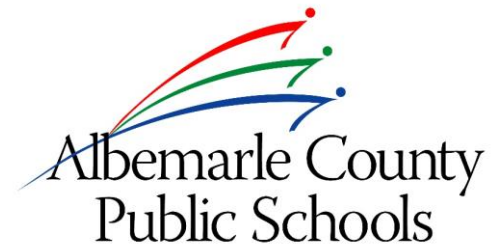


WAHS SCIENCE LAB ADDITION AND RENOVATION

Albemarle County Public Schools

October 12, 2017



OWNER:

Albemarle County Public Schools
Contact: Lisa Glass

lglass@albemarle.org

ARCHITECT:

VMDO Architects
200 E Market St.
Charlottesville, VA 22902
(434)296-5684
www.vmdo.com
Contact: Ken Thacker

kthacker@vmdo.com

CIVIL ENGINEER:

Timmons Group
608 Preston Avenue, Suite 200
Charlottesville, VA 22903
(434)327-1668
www.timmons.com
Contact: Craig Kotarski

Craig.Kotarski@timmons.com

MEP ENGINEER:

Lawrence Perry & Associates
15 E. Salem Avenue, SE, Suite 101
Roanoke, Virginia 24011
(540)342-1816
lpa-inc.com
Contact: Rick Hughes

RHughes@lpa-inc.com

STRUCTURAL ENGINEER:

Fox + Associates, PC
12085 Gayton Road
Richmond, VA 23238
(804)750-2085
www.foxengineers.com
Contact: John Ireland

jireland@foxengineers.com

PROJECT DESCRIPTION:

Scope:

10,000 SF, 2-story Addition

8,000 SF Renovation

3,000 SF “Modernization”

Miscellaneous “daylighting” in (7) rooms

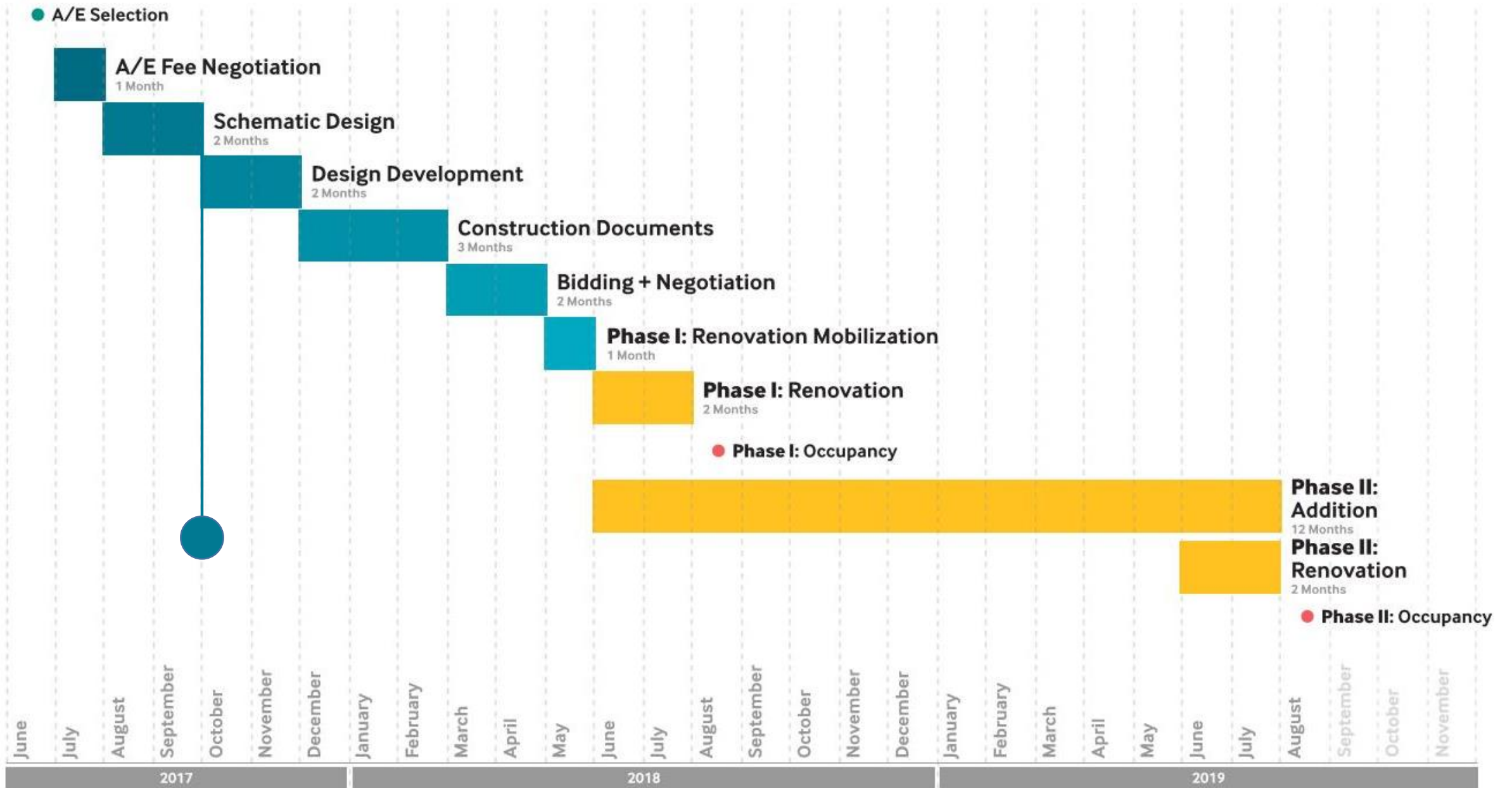
Budget:

\$4.9 million

Schedule:

Phase I renovation completion: Fall 2018

Phase II renovation / addition
completion: Fall 2019

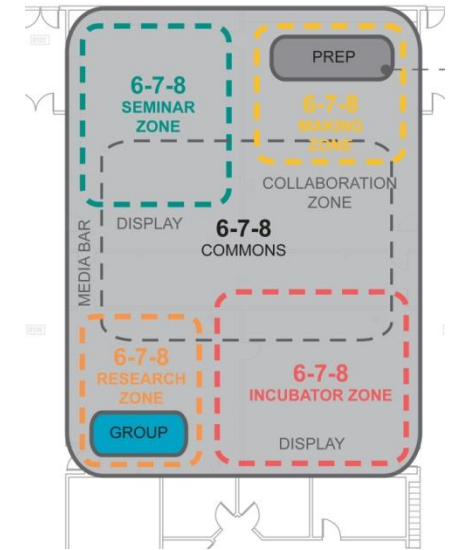
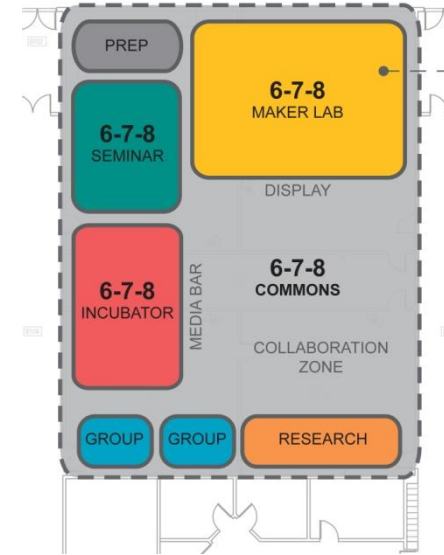
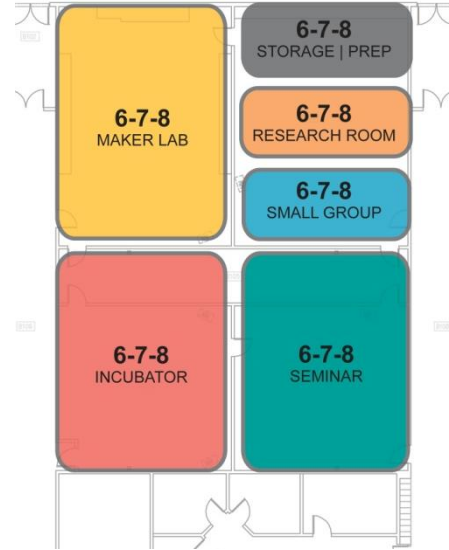
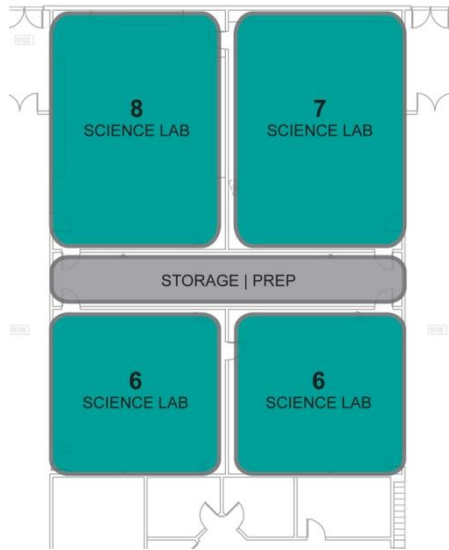


JUNE 30	Visioning Meeting #1	Kick-off
JULY 17	Visioning Meeting #2	Admin + Teachers Visioning
JULY 31	Visioning Meeting #3	Admin + Teachers + Students Visioning
AUG 15	Visioning Meeting #4	Admin + Teachers Visioning
AUG 28	Visioning Meeting #5	Admin Transition into Program
SEPT 11	Schematic Meeting #1	Admin Programming
SEPT 18	Schematic Meeting #2	Admin Finalize Addition Footprint
SEPT 25	Schematic Meeting #3	Admin Finalize Program
OCT 02	Schematic Meeting #4	Admin + Teachers Finalize Schematic
OCT 12	School Board Presentation	Schematic Designs

SITE WORK	ACPS line item + \$30,000 "LEED" costs = VMDO recommends \$500,000 per acre; Total site between WAHS and ESA is (2) acres	\$ 300,000
NEW ADDITION	ACPS line item: 10,000 GSF x \$293/SF (building only) = (\$2,875,000 + \$55,000 "LEED" costs) Consider lack of economies of scale	\$ 2,930,000
SCIENCE CLASSROOM RENOVATION	ACPS line item: 8,300 GSF x \$163,571 per room = \$138/SF (\$120 @ Jouett/Walton project) Does not account for existing corridors to remain 7840 GSF Heavy Renovation x \$129 1370 GSF Medium Renovation x \$100	\$ 1,145,000
(6) CR MODERNIZATION	ACPS line item: 6 rooms x \$46,083 per room = ~\$50/SF (\$120 @ Jouett/Walton project) 3000 GSF Shop "Clean up" (N.I.C.) and Paint x \$10/SF 3140 GSF Light Renovation x \$78/SF	\$ 276,500
ART ROOM	New casework and skylights or possible windows =	\$ 100,000
"FRONT ROOMS"	New skylights; possible windows =	\$ 100,000
"QUAD ROOMS"	New skylights =	\$ 50,000
TOTAL CONSTRUCTION COST		\$ 4,901,500

LEARNING LAB | PROGRAM PRECEDENT

Evolution and Continuum



now

Science Classrooms

Learning Studios

Learning Suite

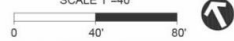
next year

future

Learning Lab

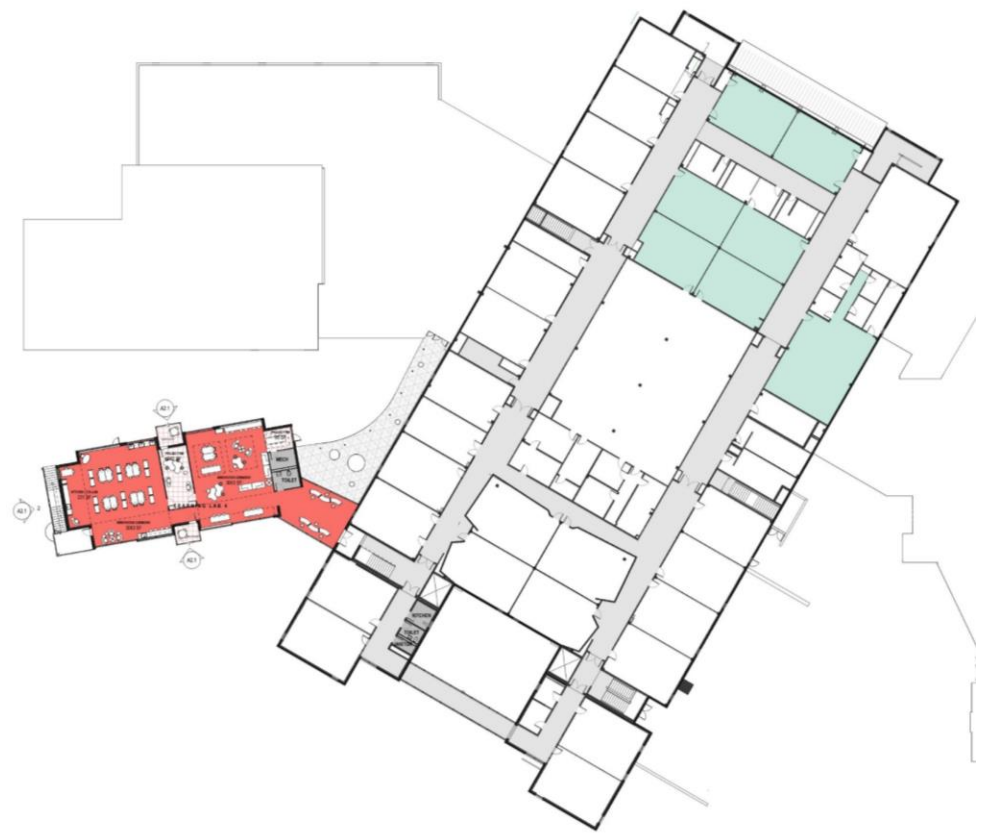
- 1 Science Addition
- 2 Cistern to Capture Roof Runoff
- 3 Service Drive / Workshop Terrace
- 4 Outdoor Classroom
- 5 Raised Pedestrian Crossing
- 6 Stormwater Swale
- 7 CIP Concrete Check Dams
- 8 Observation Deck and Boardwalk (Future)
- 9 Environmental Studies Academy
- 10 Existing Parking Lot - Reduced to 22 Spaces
- 11 Vineyard (Future)
- 12 Retrofit Drain Inlet and Raise Grade / Potential Landscape Improvements
- 13 Remove Existing Trailer (By Others)
- 14 New Dumpster / Compost Enclosure
- 15 Educational Water Feature

SCALE 1"=40'





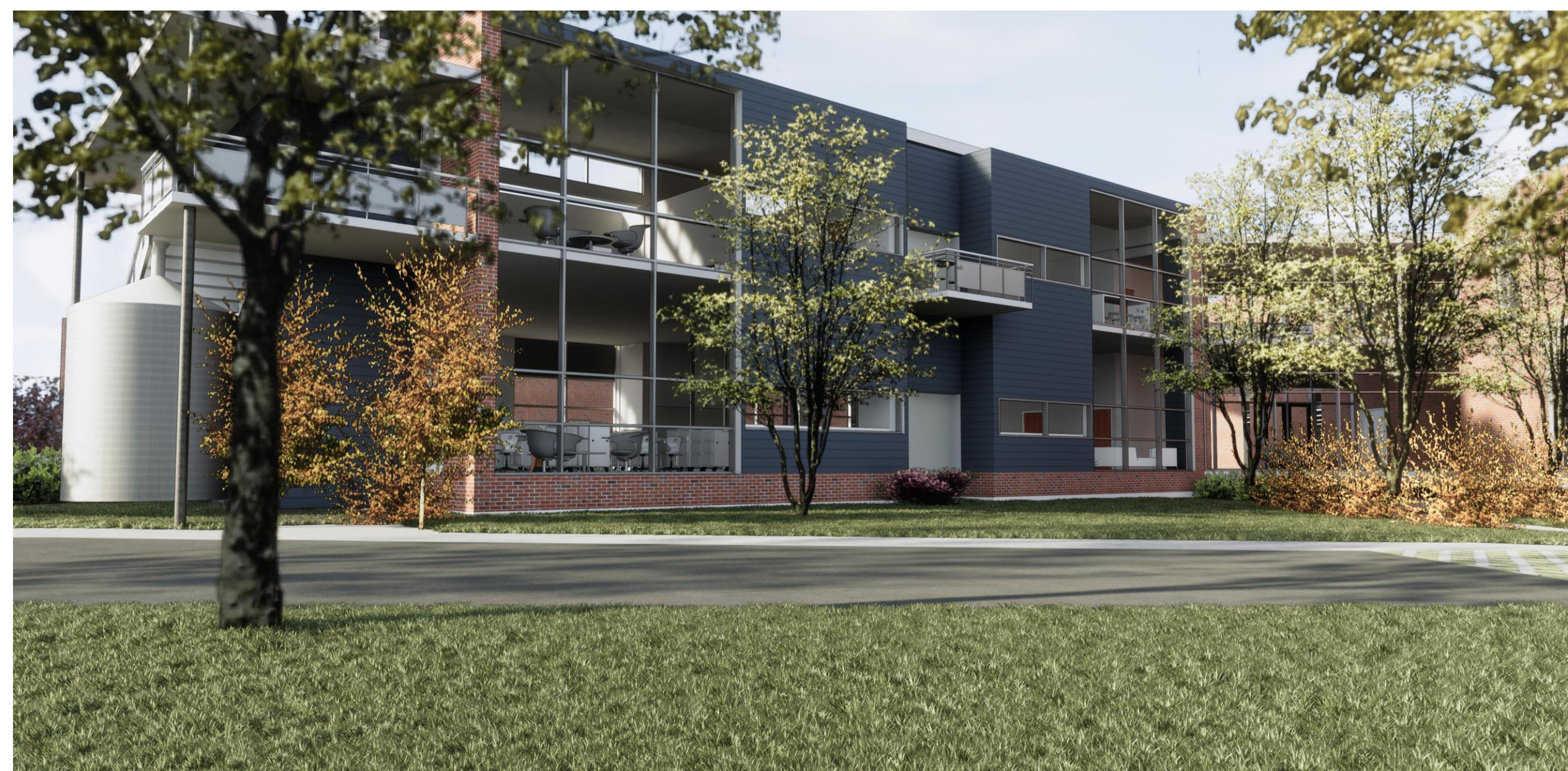

FIRST FLOOR



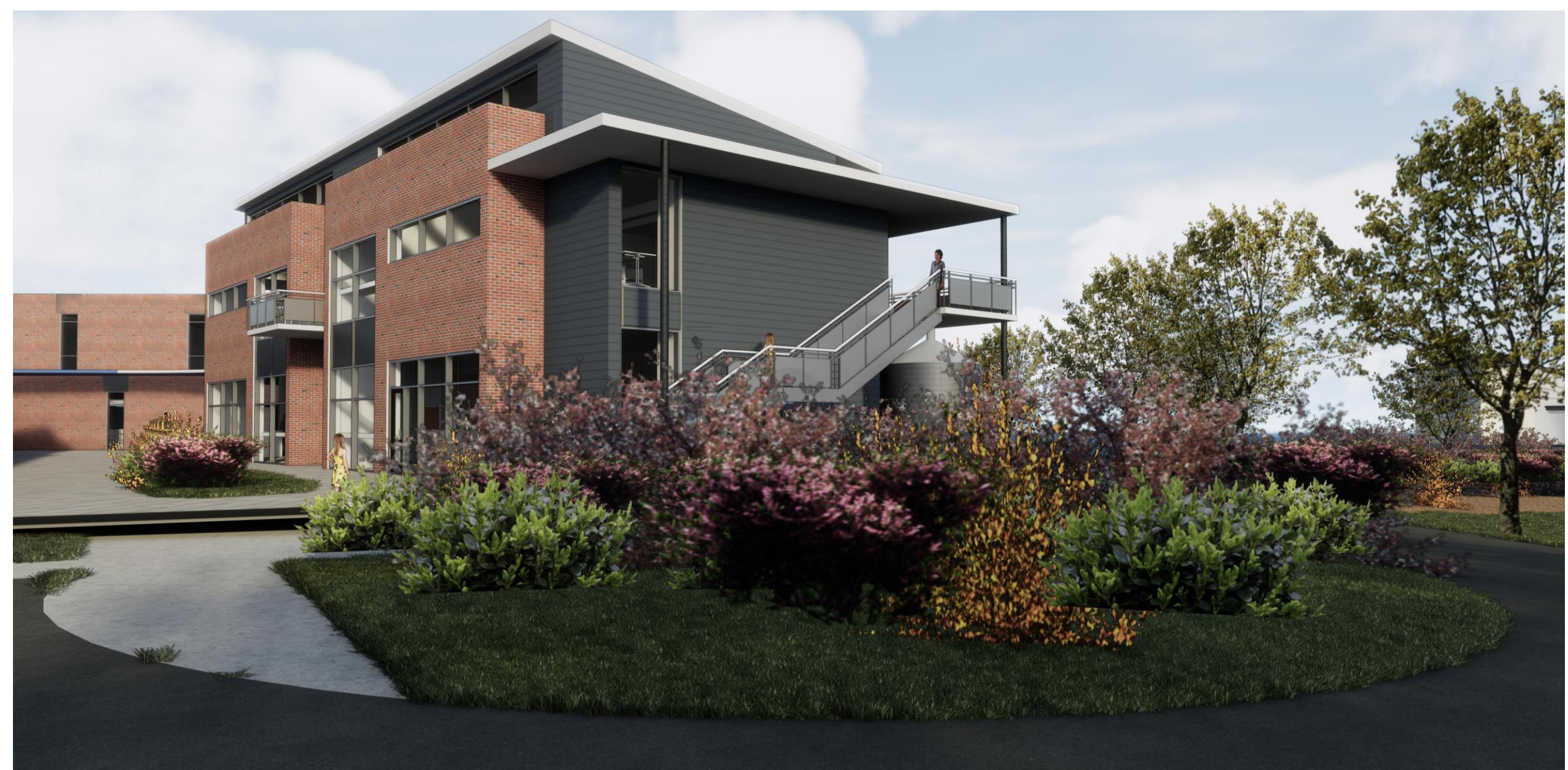
SECOND FLOOR







ADDITION | VIEW OF SOUTH FACADE



ADDITION | VIEW OF WEST FACADE



ADDITION | VIEW OF NORTH FACADE AND WORK TERRACE